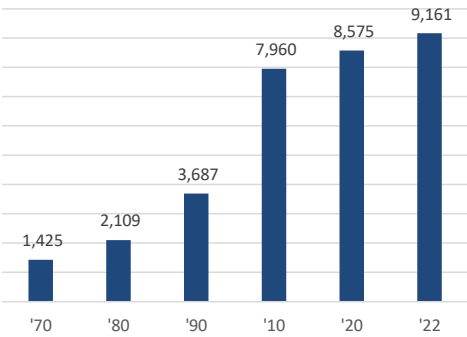
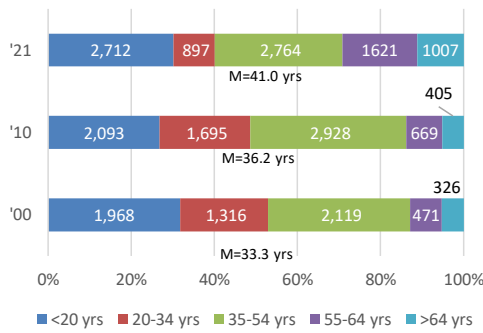


CITY DEMOGRAPHICS

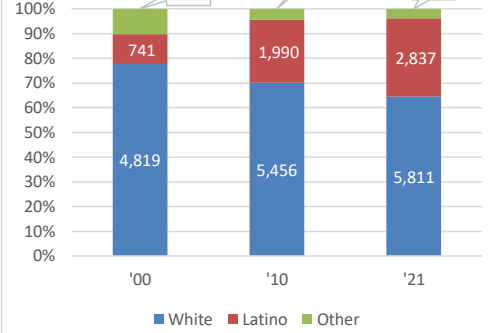
POPULATION



AGE

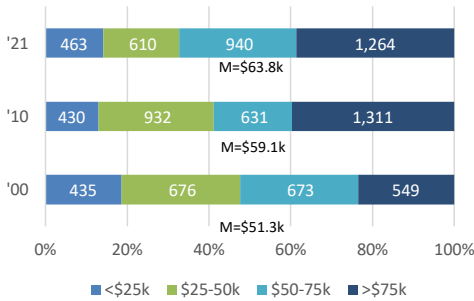


RACE/ETHNICITY

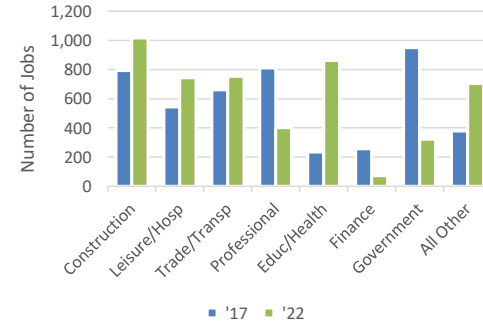


CITY EMPLOYMENT & INCOME

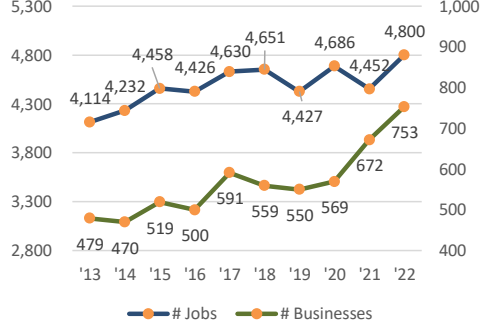
HOUSEHOLD INCOME DISTRIBUTION*



JOBS BY INDUSTRY SECTOR



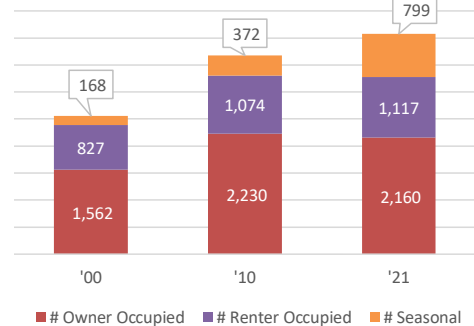
NUMBER OF JOBS & BUSINESSES



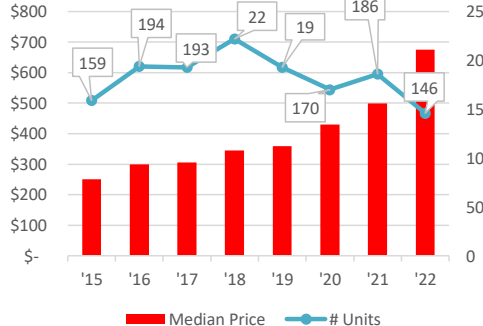
*Not adjusted for inflation

CITY HOUSING STOCK

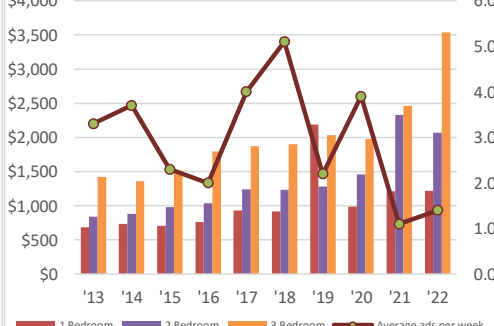
HOUSING STOCK UTILIZATION



SINGLE FAMILY/CONDO SALES (\$000)

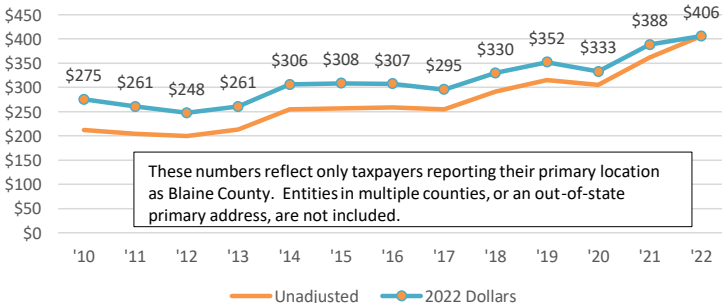


AVERAGE RENT/MO & ADS PER WEEK



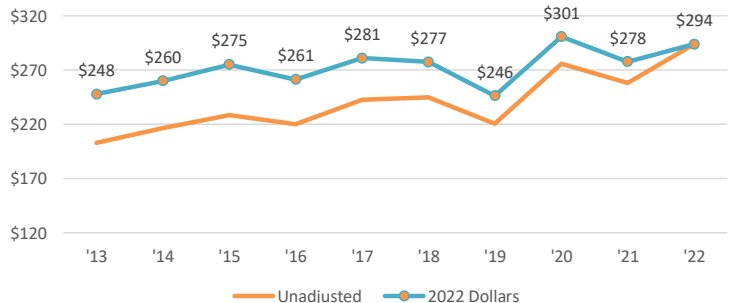
CITY BUSINESS ACTIVITY

TOTAL REPORTED SALES (\$M)



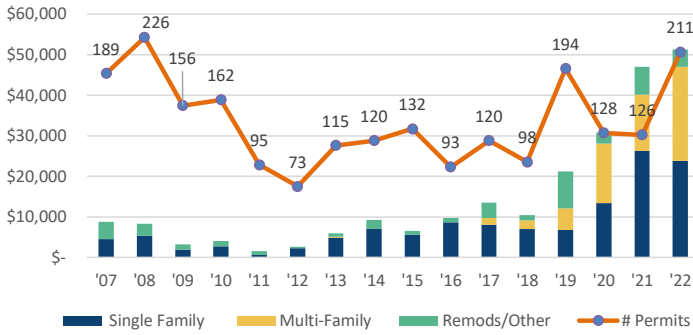
These numbers reflect only taxpayers reporting their primary location as Blaine County. Entities in multiple counties, or an out-of-state primary address, are not included.

TOTAL REPORTED WAGES (\$M)

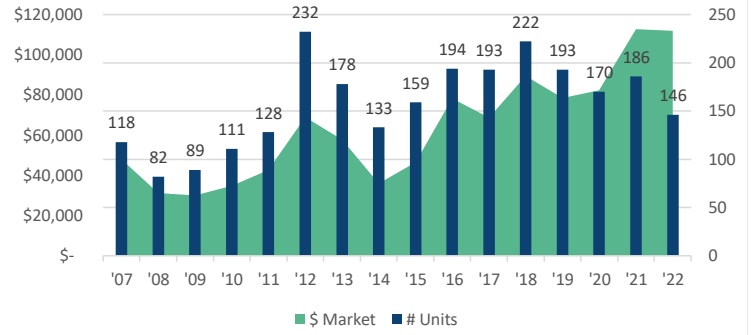


CITY RESIDENTIAL ACTIVITY

RESIDENTIAL BUILDING PERMITS (\$000)

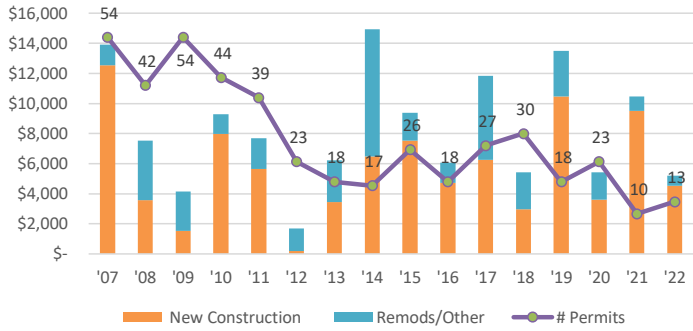


RESIDENTIAL SALES TRANSACTIONS (\$000)

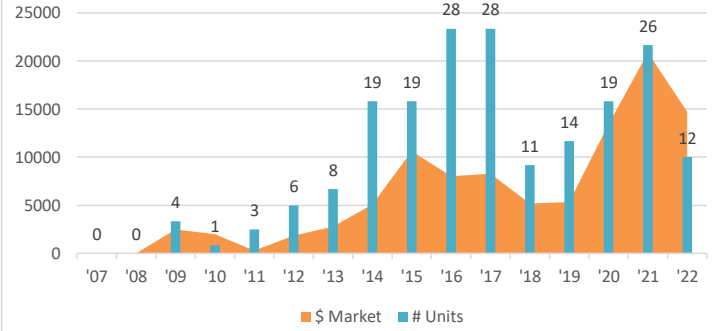


CITY COMMERCIAL ACTIVITY

COMMERCIAL BUILDING PERMITS (\$000 & #)

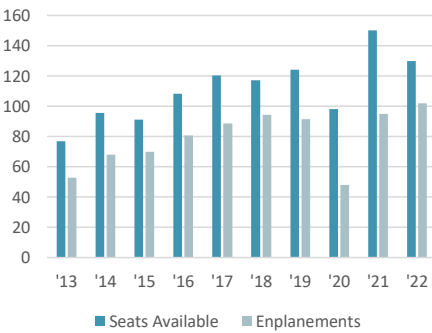


COMMERCIAL SALES TRANSACTIONS (\$000)

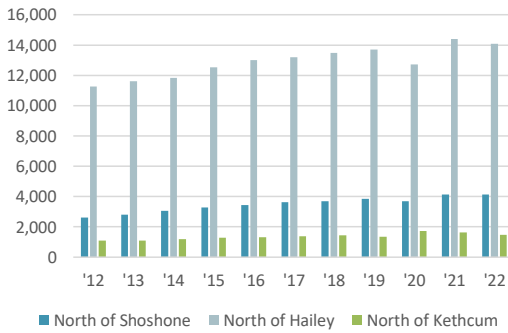


TOURISM MEASURES

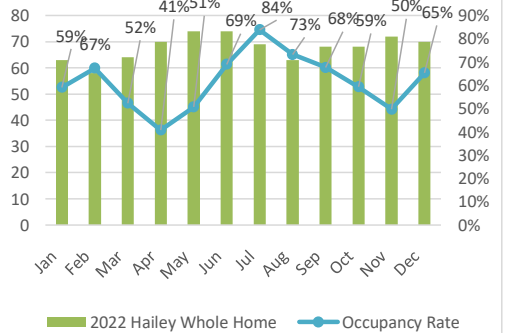
SUN SEATS & ENPLANEMNTS (000)



AVERAGE DAILY TRAFFIC VOLUME



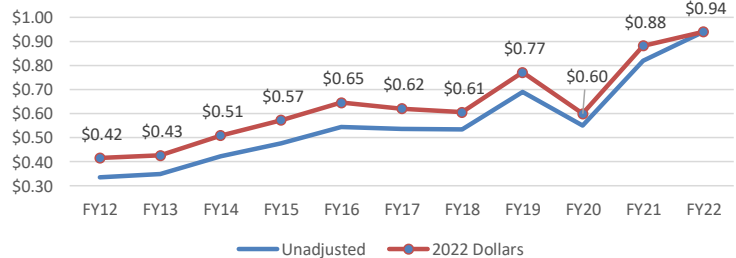
SHORT TERM RENTAL LISTINGS & OCC



CITY GOVERNMENT ACTIVITY

	FY 2022	FY 2021	% Change
CITY OF HAILEY			
Revenue Expenditures (\$m)	\$ 9.57	\$ 8.36	15%
Capital Expenditures (\$m)	\$ 0.26	\$ 2.63	-90%
Employees (# FTE)			
Property Taxes (\$ per mil)			
Total Assessed Value (\$m)	\$ 2,488	\$ 1,879	32%

LOCAL OPTION TAXES (\$M)



OTHER STATISTICS

RELATIVE COMPARISONS:	Blaine	Idaho	U.S.	OTHER HAILEY DATA:	2022	2021	2020	2019	2018
Unemployment Rate (%)	2.5%	2.8%	3.5%	Serious Crime (per 100k)	2.1%	1.5%	1.4%	1.7%	1.8%
School Spending (\$000/pupil)	\$18.30	\$8.30	\$14.30	Officers/1k					
Graduation Rates (%)	86%	82%	86%	Top 5 Employers:					
Bachelors Degree or Higher (%)	42%	31%	38%	1. Blaine County School District					
Population Density (per mile ²)	9	22	94	2. Power Engineers					
Travel time to work (minutes)	18	22	28	3. Blaine Co. Government					
Home Electrical Rates (\$/kWh)	\$0.08	\$0.08	\$0.16	4. Albertson's					
Serious Crime (per 100k)	2.5%	2.4%	N/A	5. Atkinson's Market					
Per Capita Income ('21, \$000)	\$134.70	\$54.50	\$66.50						