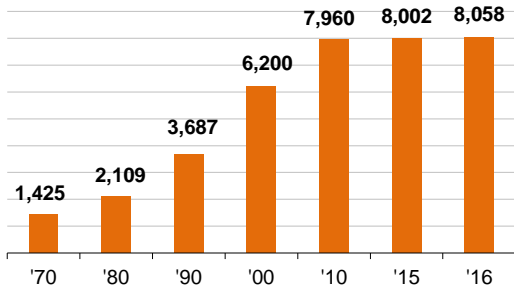
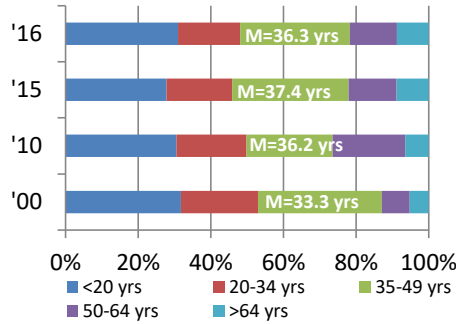


CITY DEMOGRAPHICS

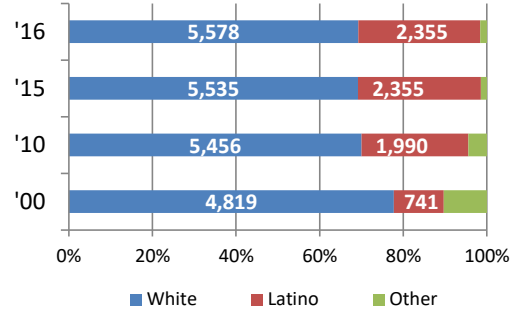
Population



Age

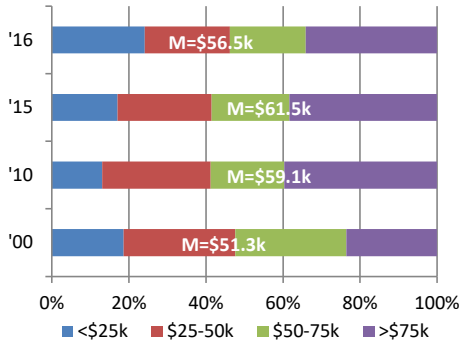


Race/Ethnicity

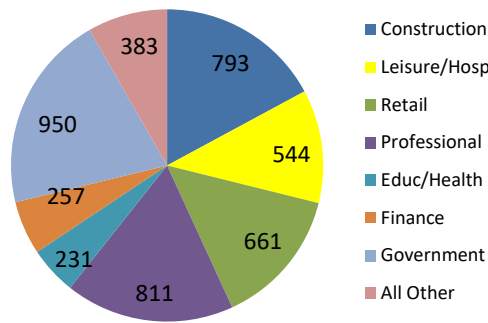


CITY EMPLOYMENT & INCOME

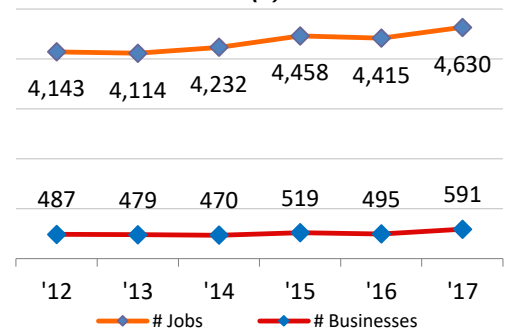
Household Income Distribution*



Jobs by Industry Sector (#)



Jobs & Businesses (#)



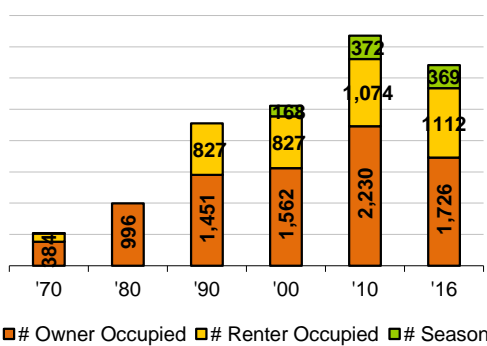
*Not adjusted for inflation

Total Employed: 4,630 12.5% 5-Yr % change

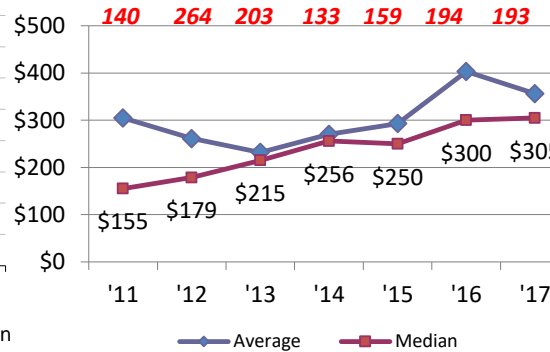
BC Unemployment Rate: 2.5%

CITY HOUSING STOCK

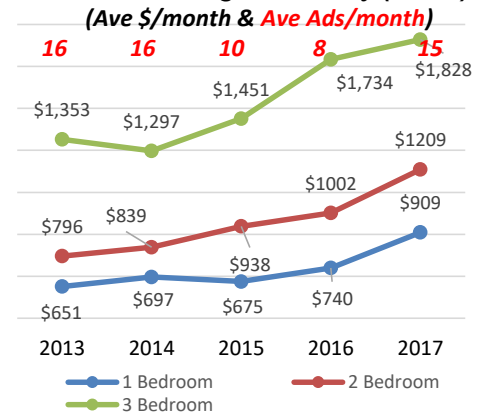
Housing Stock Utilization(# units)



Single Family/Condo Sales (\$000 & #)



Rental Housing Availability (2017\$)

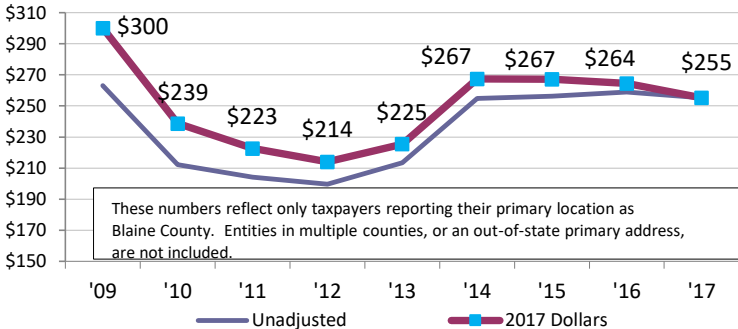


Total Housing Units ('16): 3,207

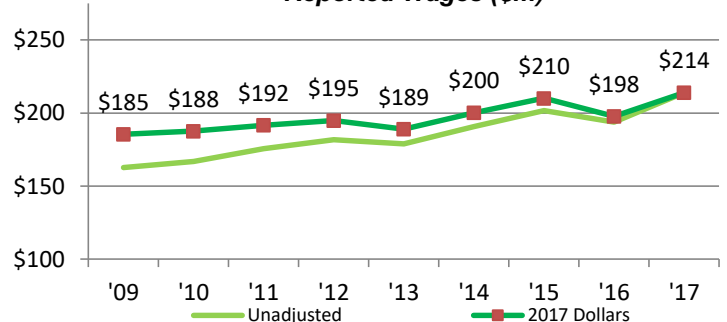
Average Household Size ('16): 2.84

CITY BUSINESS ACTIVITY

Reported Sales (\$m)

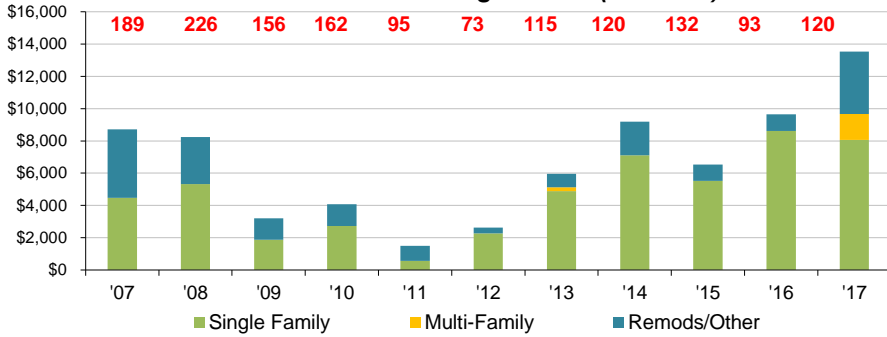


Reported Wages (\$m)

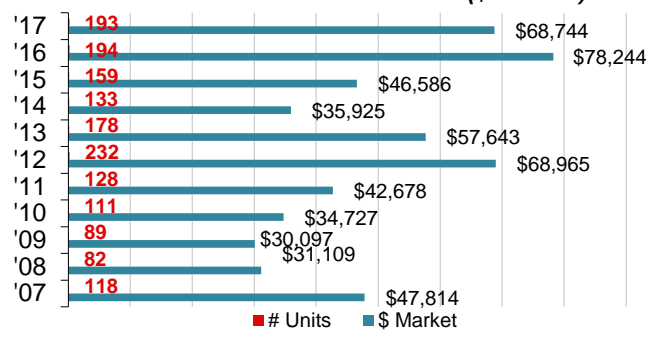


CITY RESIDENTIAL ACTIVITY

Residential Building Permits (\$000 & #)

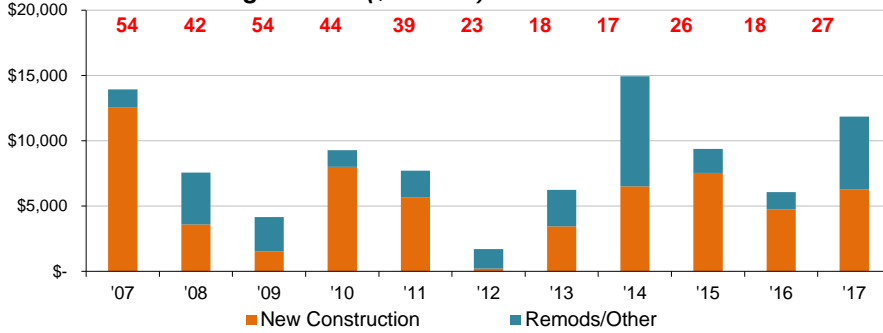


Residential Sales Transactions (\$000 & #)

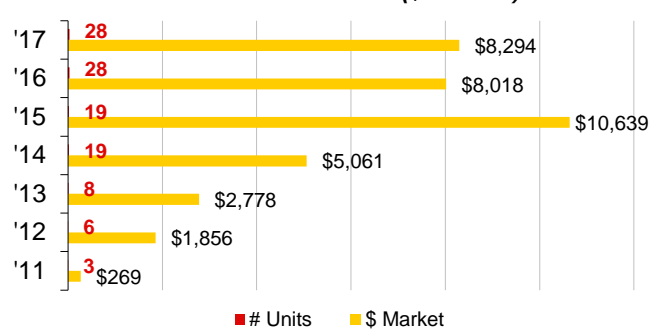


CITY COMMERCIAL ACTIVITY

Commercial Building Permits (\$000 & #)

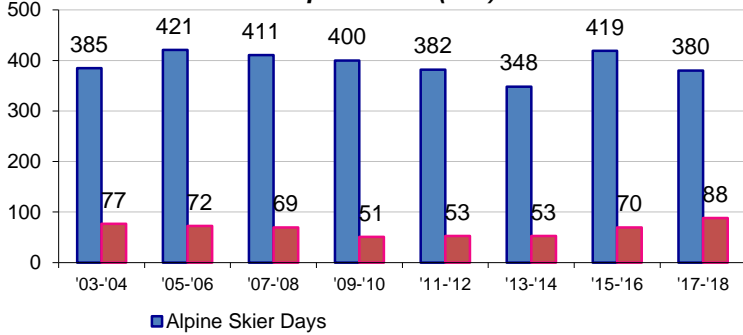


Commercial Sales Transactions (\$000 & #)



CITY TOURISM MEASURES

Skier & Airport Visits (000)



Room Nights Sold DestiMetrics

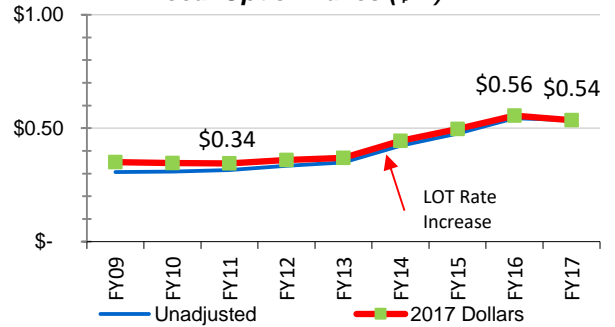


CITY GOVERNMENT ACTIVITY

CITY OF HAILEY

	FY 2017	FY 2016	% Change
Revenue Expenditures (\$m)	\$ 8.11	\$ 7.59	7%
Capital Expenditures (\$m)	\$ 0.55	\$ 1.47	-45%
Employees (# FTE)	\$ 58.4	\$ 60.4	-3%
Property Taxes (\$ per mil)	\$ 9,122	\$ 9,318	-2%
Total Assessed Value (\$m)	\$ 1,132	\$ 1,057	7%

Local Option Taxes (\$m)



OTHER STATISTICS

RELATIVE COMPARISONS:

	Blaine	Idaho	U.S.
Unemployment Rate (%)	2.5%	3.2%	4.1%
School Spending (\$000/pupil)	\$ 16.0	\$ 7.2	\$ 11.8
Graduation Rates (%)	91%	80%	83%
Bachelors Degree or Higher (%)	42%	26%	30%
Population Density (per mile ²)	8	20	86
Travel time to work (minutes)	18	20	26
Home Electrical Rates (\$/kWh)	\$ 0.09	\$ 0.09	\$ 0.12
Serious Crime ('17; per 100k)	1.9%	5.1%	na
Per Capita Income ('16 \$000)	\$ 92.5	\$ 39.5	\$ 49.2

OTHER HAILEY DATA:

	2017	2016	2015
Crime (/100k)	1.8%	2.3%	2.3%
Officers/1k	1.6	1.6	
Top 5 Employers:	1 Blaine County Schools 2 Power Engineers 3 Blaine Co. Government 4 Albertson's 5 Atkinson's Market		