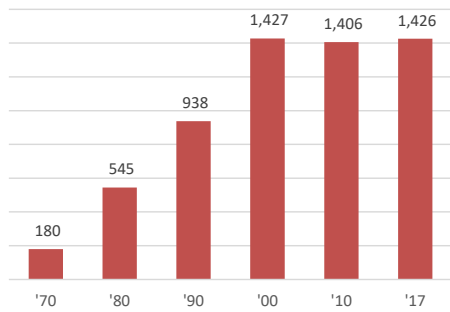


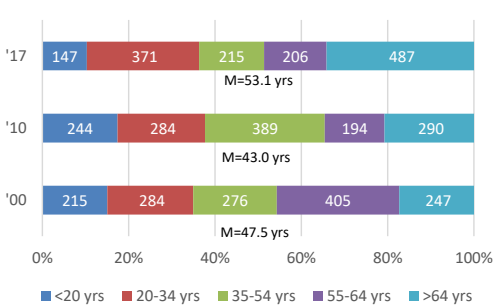


CITY DEMOGRAPHICS

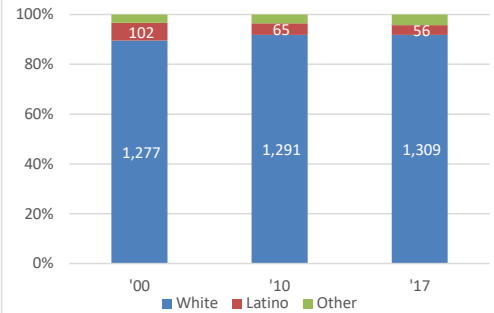
POPULATION



AGE

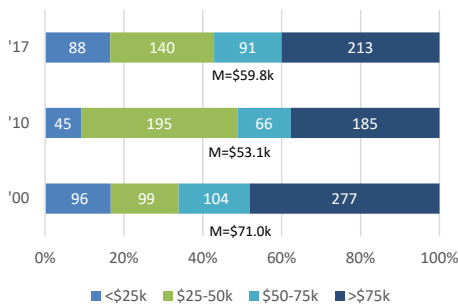


RACE/ETHNICITY

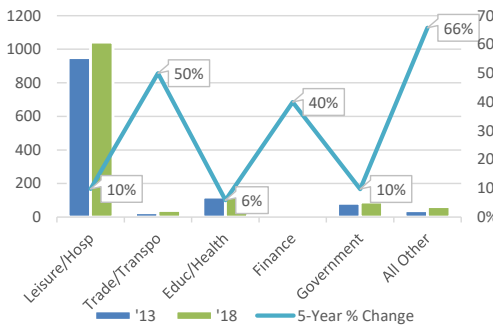


CITY EMPLOYMENT & INCOME

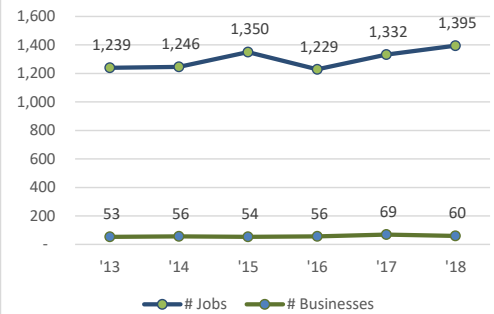
HOUSEHOLD INCOME DISTRIBUTION



JOB BY INDUSTRY SECTOR (#)

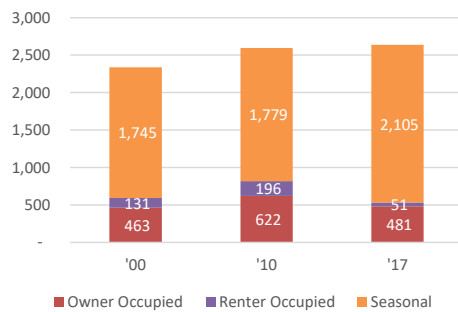


NUMBER OF JOBS AND BUSINESSES

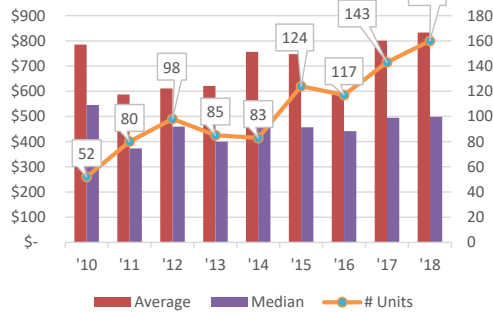


CITY HOUSING STOCK

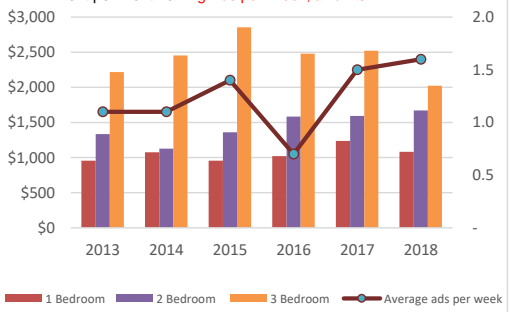
HOUSING STOCK UTILIZATION (UNITS)



RESIDENTIAL UNIT PRICE (\$000)

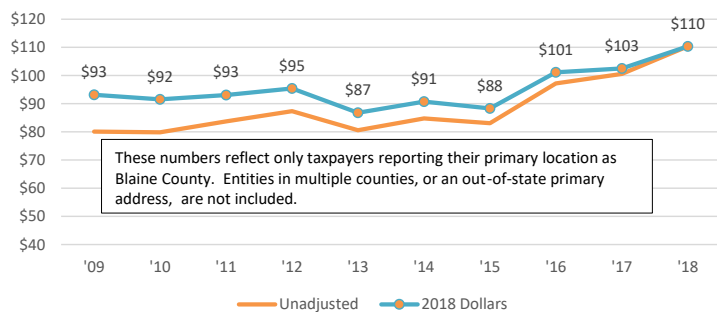


AVG RENT AND ADS PER MONTH (2018\$)

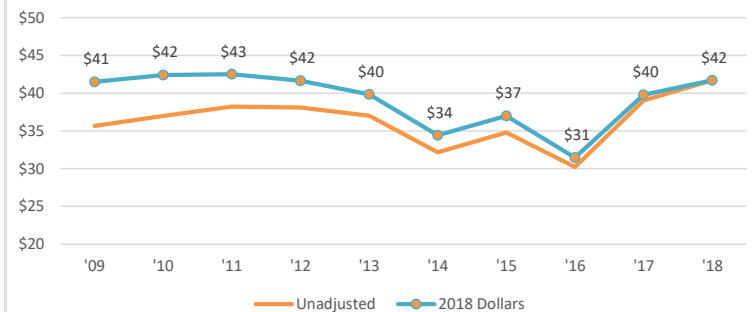


CITY BUSINESS ACTIVITY

REPORTED SALES (\$M)

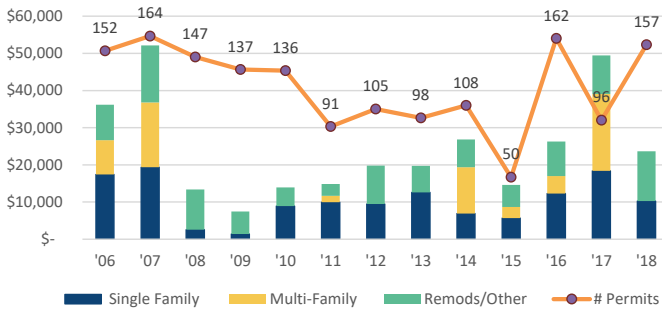


REPORTED WAGES (\$M)

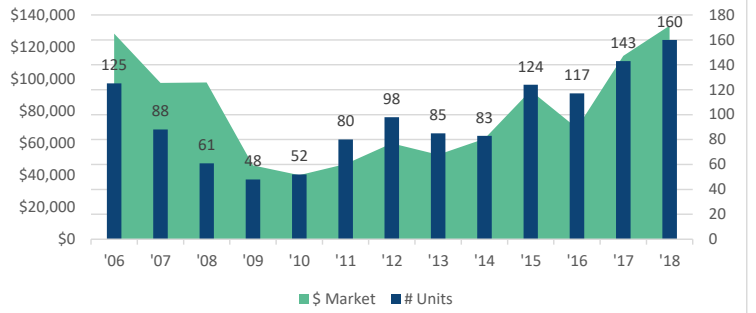


CITY RESIDENTIAL ACTIVITY

RESIDENTIAL BUILDING PERMITS (000s & #)

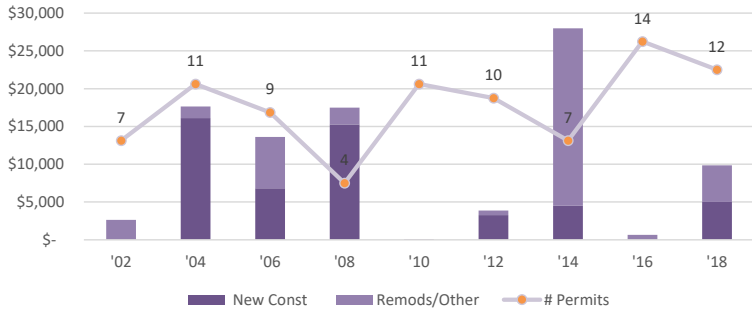


Residential Sales Transactions (\$000 & #)

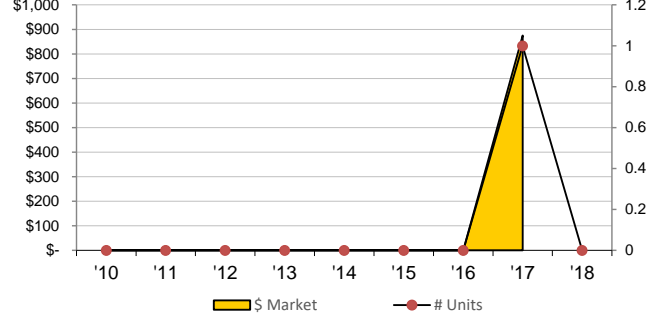


CITY COMMERCIAL ACTIVITY

COMMERCIAL BUILDING PERMITS (\$000)

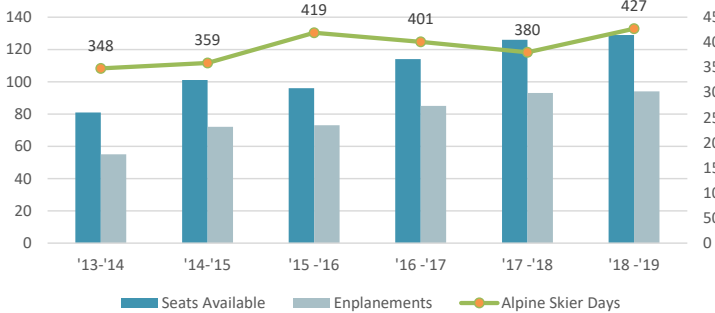


COMMERCIAL SALES TRANSACTIONS (\$000)

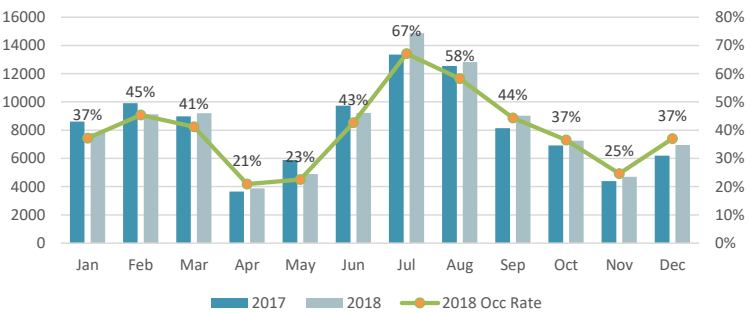


TOURISM MEASURES

SEATS, ENPLANEMENTS, & SKIER DAYS (in 000's)



ROOM NIGHTS SOLD AND OCCUPANCY RATE

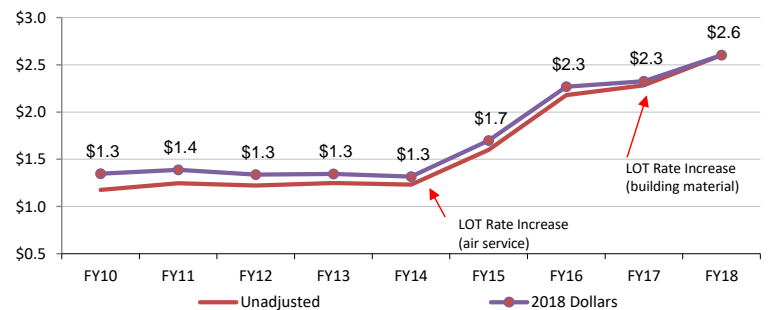


CITY GOVERNMENT ACTIVITY

CITY OF SUN VALLEY:

	FY2018	FY2017	% Change
Revenue Expenditures (\$m)	\$6.5	\$5.2	26%
Capital Expenditures (\$m)	\$2.0	\$0.8	164%
Employees (# FTE)	not reported	34.9	#VALUE!
Property Tax Rate (\$/mil)	\$ 0	\$0	57%
Total Assessed Value (\$m)	\$ 2,446	\$2,280	7%

LOCAL OPTION TAXES (\$m)



OTHER STATISTICS

RELATIVE COMPARISONS:

	Blaine	Idaho	U.S.
Unemployment Rate (%)	2.3%	2.8%	3.9%
School Spending (\$000/pupil)		\$7.40	\$12.20
Graduation Rates (%)		81%	85%
Bachelors Degree or Higher (%)	40%	27%	31%
Population Density (per mile ²)	8	22	93
Travel time to work (minutes)	19	21	26
Home Electrical Rates (\$/kWh)	\$0.09	\$0.09	\$0.12
Serious Crime ('18; per 100k)	2.0%	5.0%	N/A
Per Capita Income ('18; \$000)	\$102.55	\$41.83	\$51.64

OTHER SV DATA:

	2018	2017	2016	2015	2014
Crime (per 100k)	2.1%	1.5%	2.1%	2.7%	2.5%
Officers (per 1k)		7.0	7.0		
Top Employers:	<ol style="list-style-type: none"> Sun Valley Co. Community School US Forest Service City of Sun Valley 				