



SUN VALLEY ECONOMIC DEVELOPMENT

2019 Economic Summit



Year 8

Intersection
of Housing
and Talent
Attraction

Blaine
County 3.0

Investing
Locally

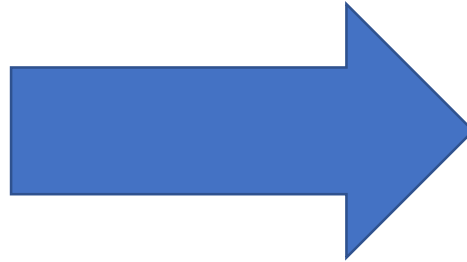
Quality of
Place

2014 Resilience Theme

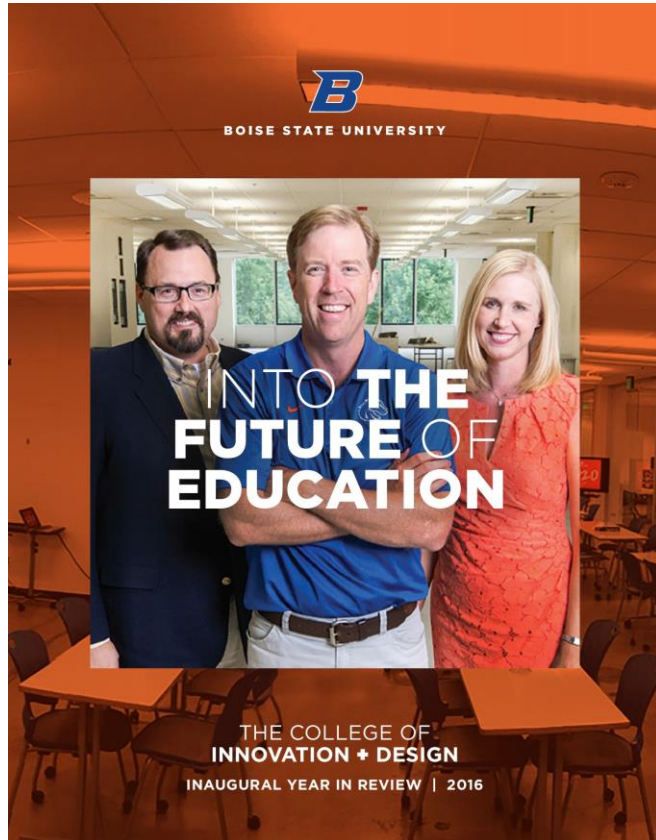


“From Adversity to Opportunity: Building a
Secure & Resilient Community”

2015 SV Institute Founded



2015 Innovation Theme



“Succeeding in the Age of Innovation: New Strategies for Local Challenges”



2016 Ketchum Innovation Center Founded







Bridging the Gaps in Our Resort Community:

Building An Economy That Works For Those Who Live It

**Economic
Policy
Institute**

**27th in
America!**

**This Idaho area has one of the most extreme income
inequality gaps in the country**

BY NICOLE BLANCHARD

JULY 22, 2018 07:30 PM, UPDATED JULY 23, 2018 04:10 PM

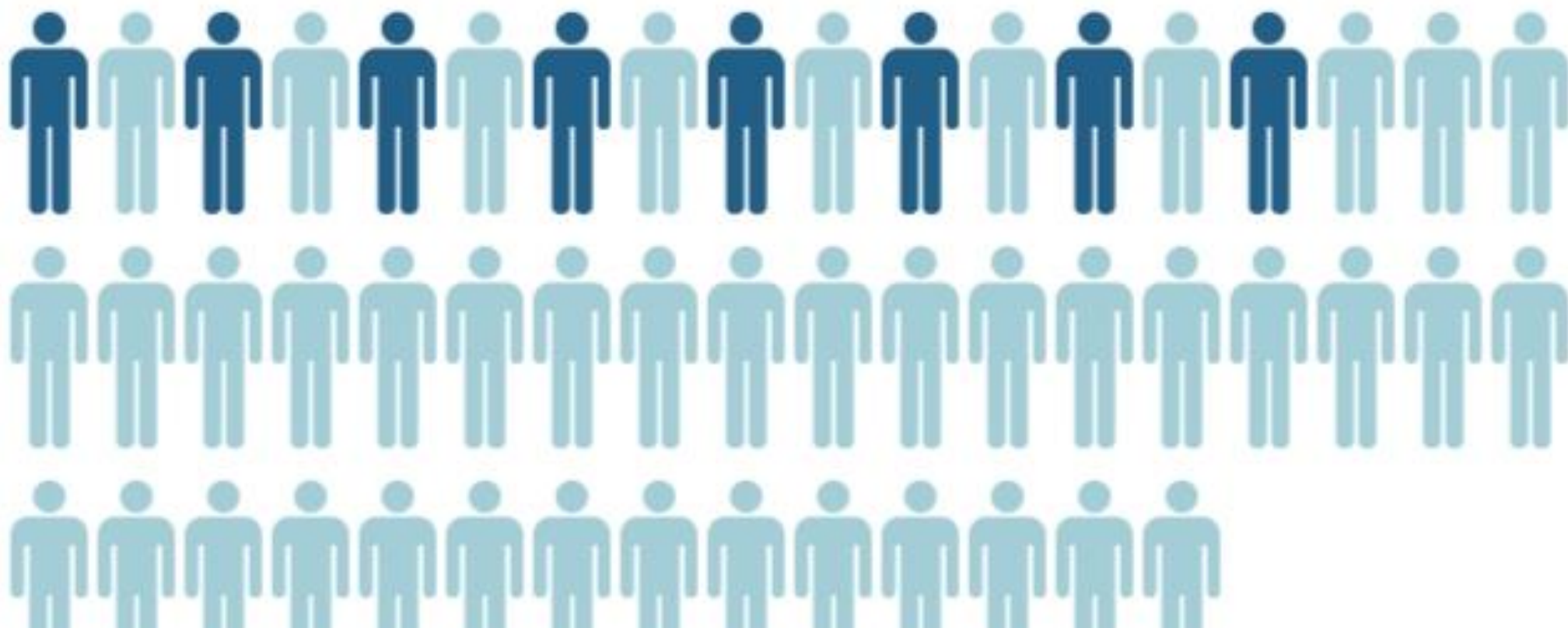


The Liberty Theatre on Main Street in Hailey, PROVIDED BY THE HAILEY CHAMBER OF COMMERCE CAROL WALLER

Well, How did I get here? ~*David Byrne*~

12%

Blaine County families with
incomes below the poverty line



16%

Blaine County residents without health insurance

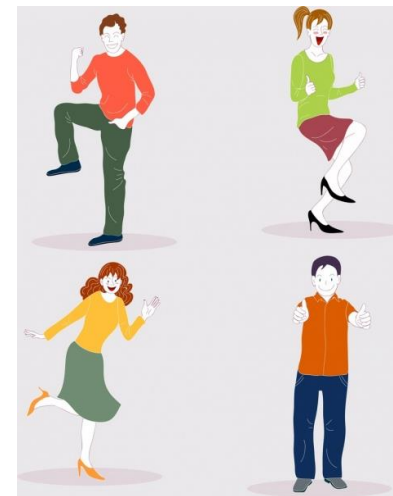


23%

Blaine County households earning
< \$50k without health insurance



Who are we?

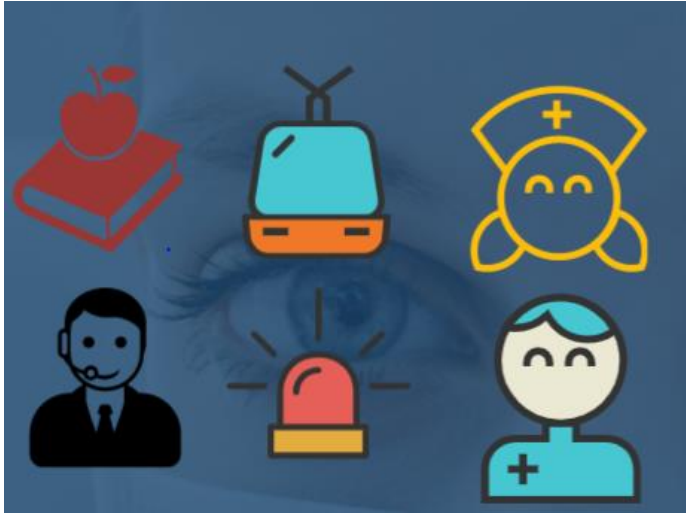


Why does it matter?

Our quality
of life

Our quality
of place

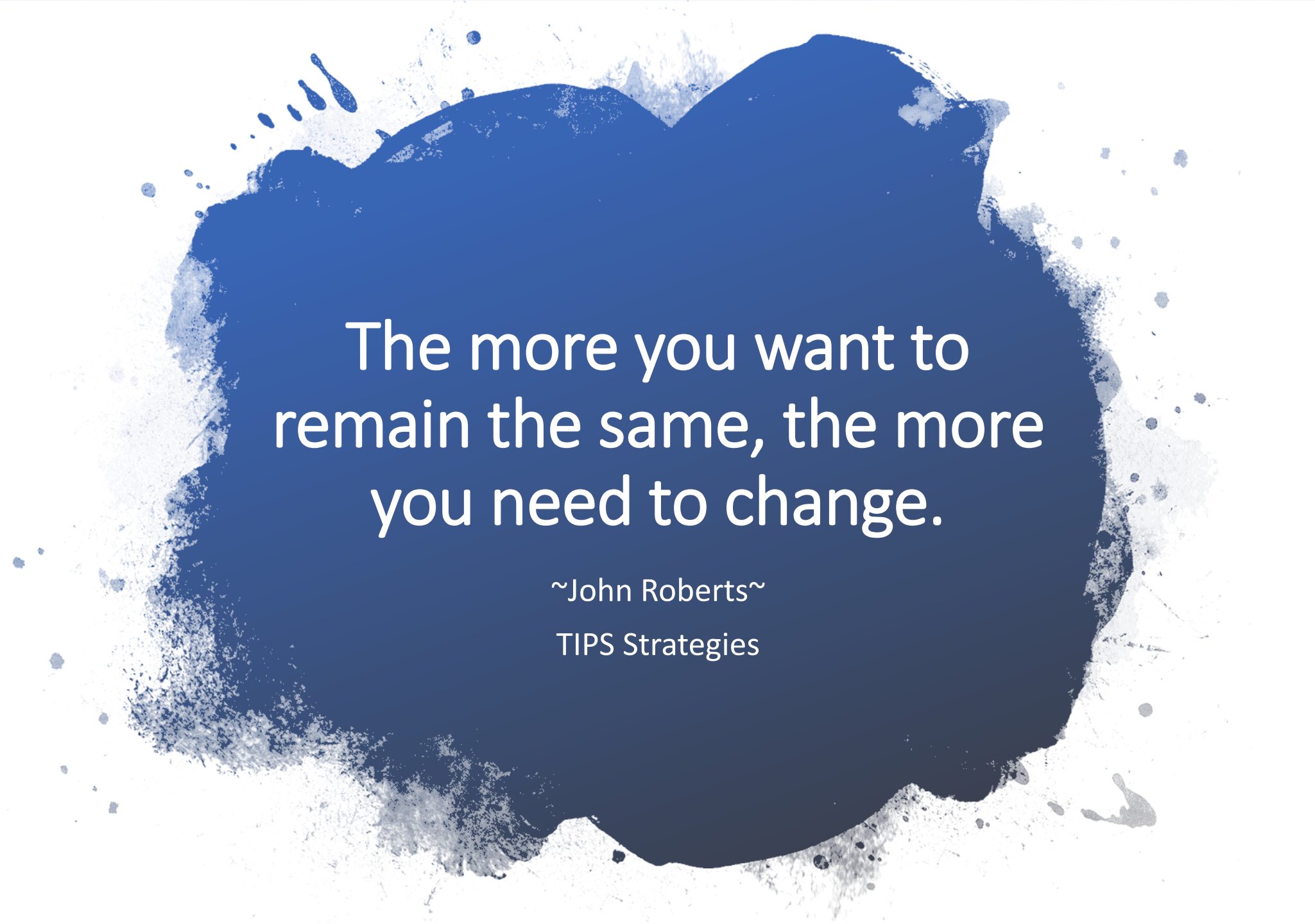
Service Providing Ages



Service Consuming Ages



**In 2000 we had 70 “providers” per 100 “consumers”
In 2025 that will be 35 “providers” per 100 “consumers”**



The more you want to
remain the same, the more
you need to change.

~John Roberts~

TIPS Strategies

A scenic landscape featuring a turquoise lake reflecting a rugged mountain range under a sunset sky. The mountains are dark and rocky, with some snow patches. The lake is calm, mirroring the sky and the surrounding forest. The foreground shows a snowy field with some small plants.

**The more things change, the
more they are the same.**

Alphonse Karr



Adaptation

- “It is not the strongest of the species that survives, nor the most intelligent. It is the one that is most adaptable to change.” ~**Charles Darwin**~
- “The measure of intelligence is the ability to change.” ~**Albert Einstein**~



Adaptation

- “Communities are like species. Each time we fail to adapt, we make ourselves less resilient and more susceptible to outside shocks.”



Adaptation is the
bridge from the
present to the future.



SUN VALLEY ECONOMIC DEVELOPMENT

2019 Economic Summit