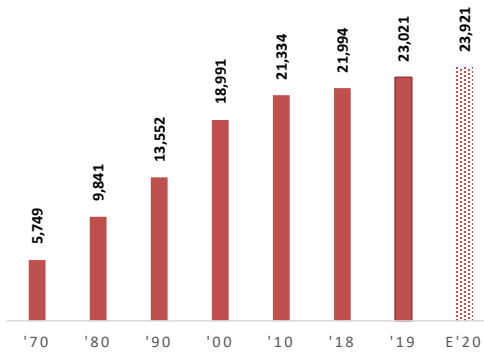


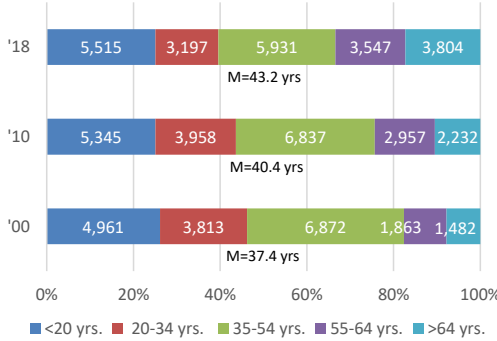


COUNTY DEMOGRAPHICS

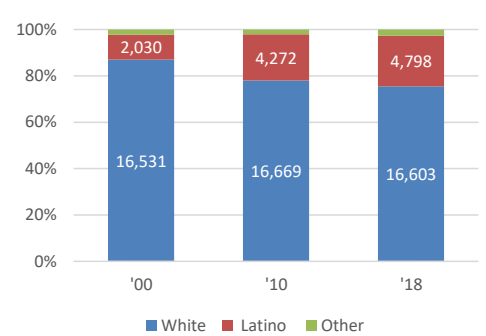
POPULATION



AGE

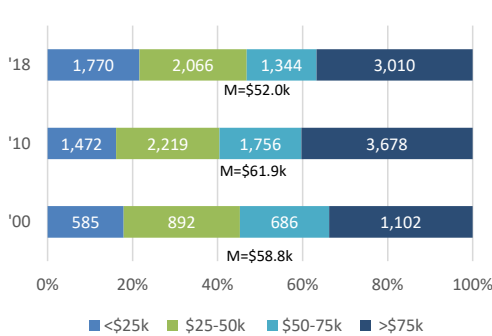


RACE/ETHNICITY

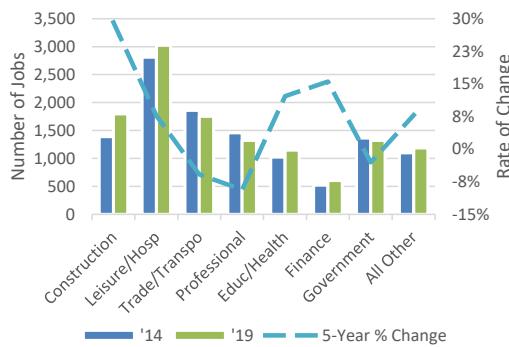


COUNTY EMPLOYMENT & INCOME

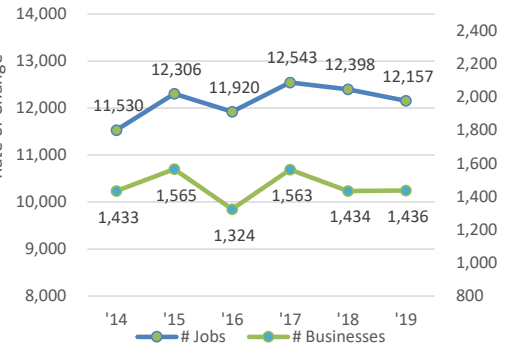
HOUSEHOLD INCOME DISTRIBUTION



JOB BY INDUSTRY SECTOR

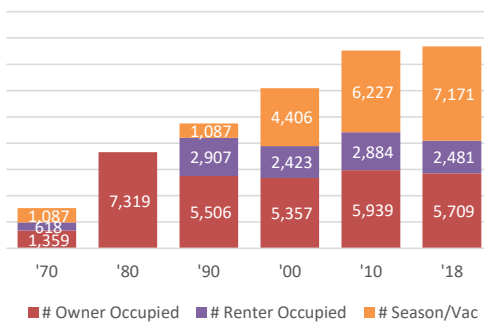


NUMBER JOBS AND BUSINESSES

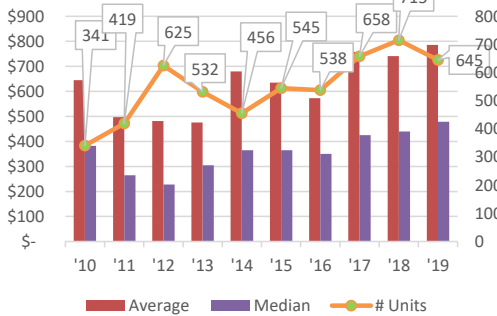


COUNTY HOUSING STOCK

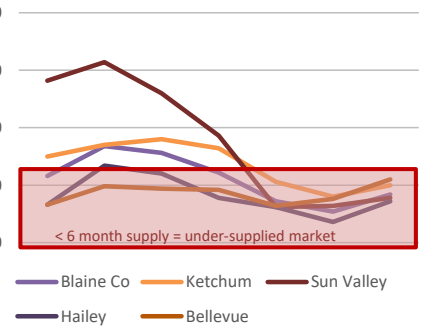
HOUSING STOCK UTILIZATION (# units)



RESIDENTIAL UNIT PRICE (\$000s)

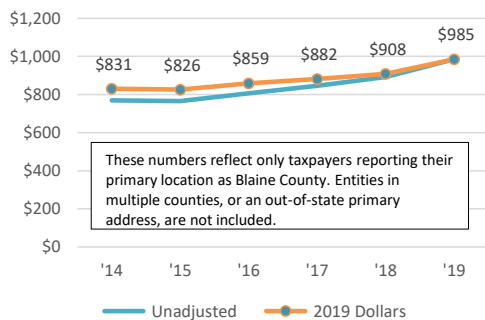


MONTHS OF SUPPLY, HOMES <450K

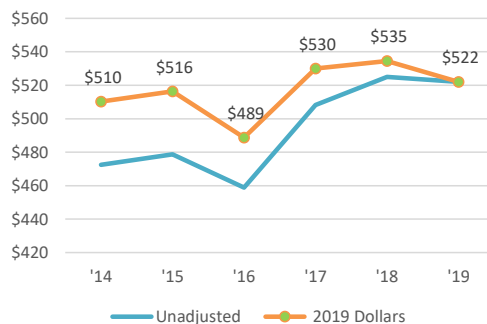


COUNTY BUSINESS ACTIVITY

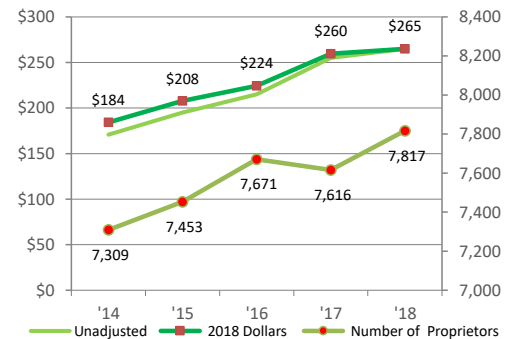
REPORTED SALES (\$M)



REPORTED WAGES (\$M)

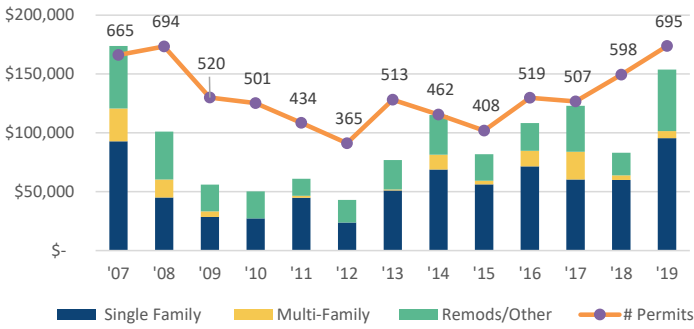


PROPRIETOR'S INCOME (\$M)

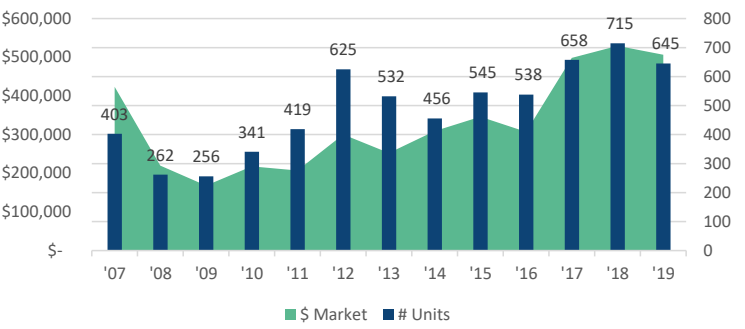


## COUNTY RESIDENTIAL ACTIVITY

### RESIDENTIAL BUILDING PERMITS (\$000)

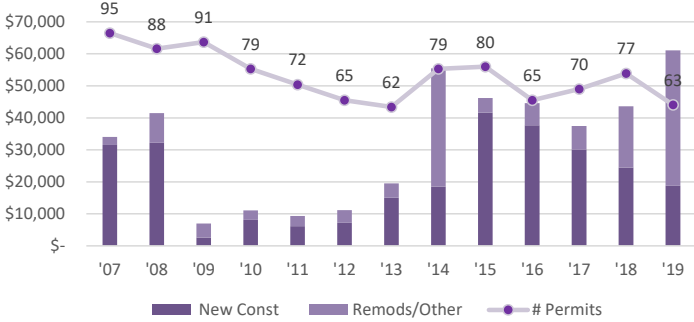


### RESIDENTIAL SALES TRANSACTIONS (\$000)

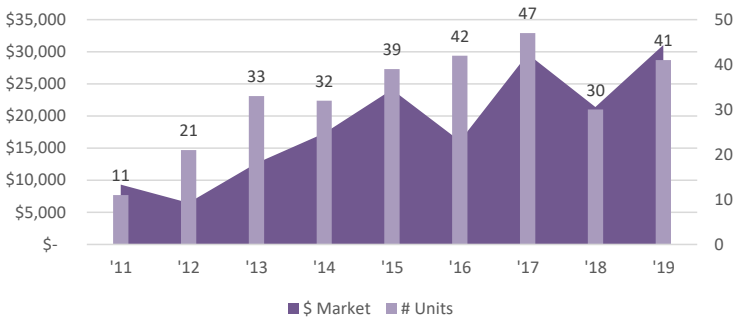


## COUNTY COMMERCIAL ACTIVITY

### COMMERCIAL BUILDING PERMITS (\$000)

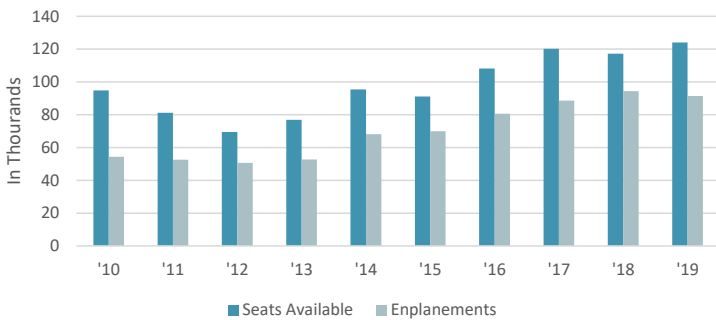


### COMMERCIAL SALES TRANSACTIONS (\$000)

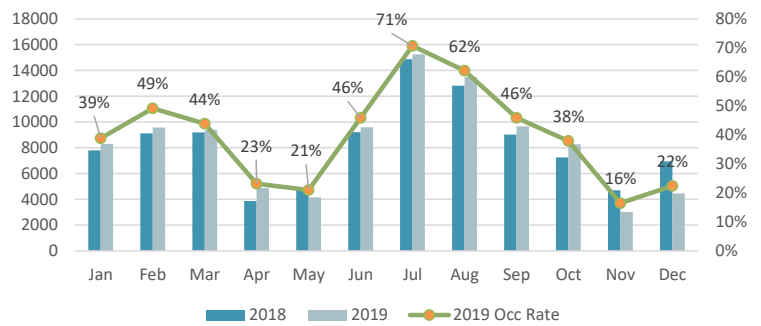


## TOURISM MEASURES

### Available Seats and Enplanements

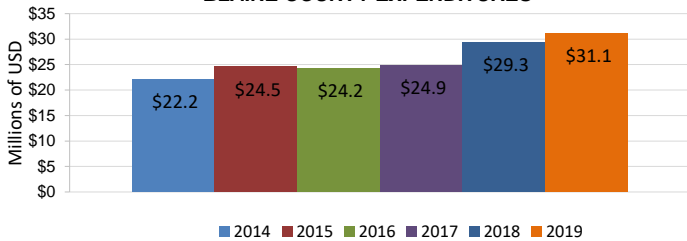


### ROOM NIGHTS SOLD AND OCCUPANCY RATE

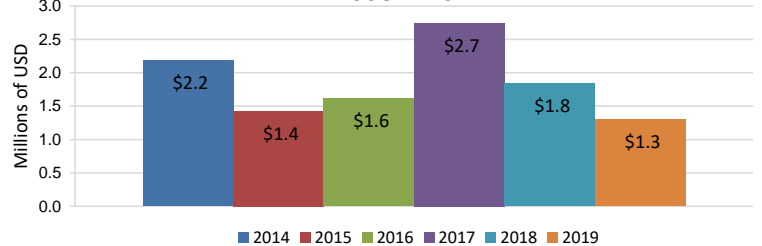


## COUNTY GOVERNMENT EXPENDITURES

### BLAINE COUNTY EXPENDITURES



### BLAINE COUNTY CAPEX



## OTHER STATISTICS

### RELATIVE COMPARISONS:

	Blaine	Idaho	U.S.
School Spending (\$000/pupil)	\$16.30	\$7.40	\$12.20
Graduation Rates (%)	86%	81%	85%
Bachelors Degree or Higher (%)	40%	27%	31%
Population Density (per mile <sup>2</sup> )	8	22	93
Travel time to work (minutes)	19	21	26
Home Electrical Rates (\$/kWh)	\$0.09	\$0.09	\$0.12
Serious Crime ('19; per 100k)	2.0%	4.6%	N/A
Per Capita Income ('18 \$000)	\$102.55		\$51.64

### OTHER COUNTY DATA:

	2019	2018	2017	2016	2015
Unemployment	2.6%	2.8%	2.5%	3.2%	3.5%
Crime/100k	2.1%	2.0%	1.9%	2.1%	2.3%
County Employees:			167	165	169
Large Employers:					
1	Sun Valley Co.				
2	Blaine County School District				
3	St. Lukes Wood River				
4	Atkinsons				
5	Power Engineers				