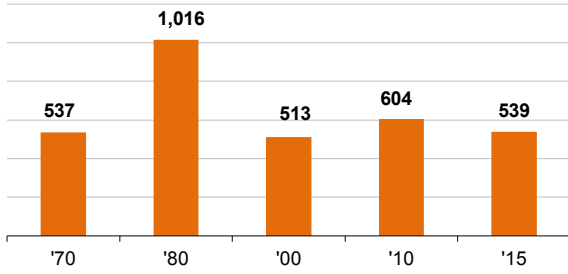


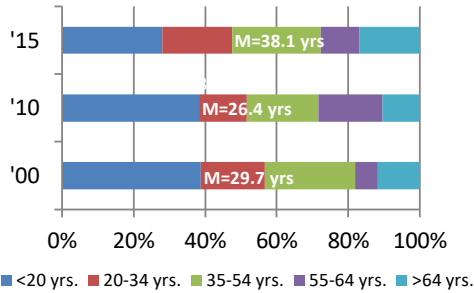


CITY DEMOGRAPHICS

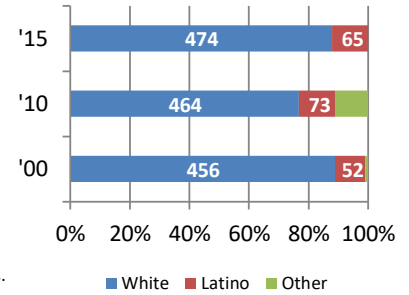
Population



Age

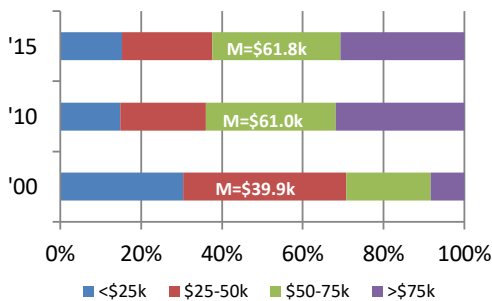


Race/Ethnicity

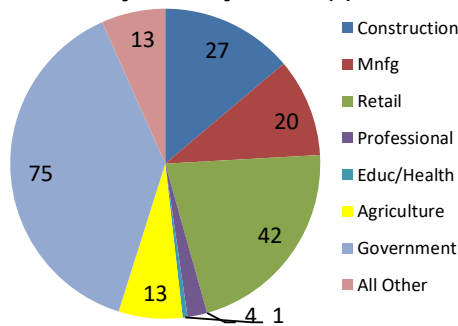


CITY EMPLOYMENT & INCOME

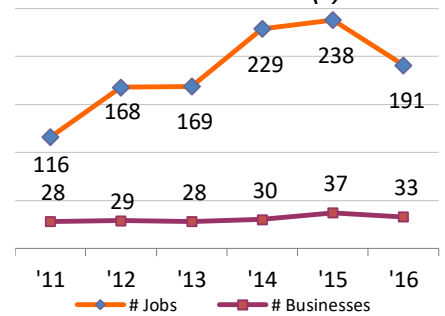
Household Income Distribution*



Jobs by Industry Sector (#)



Jobs & Businesses (#)



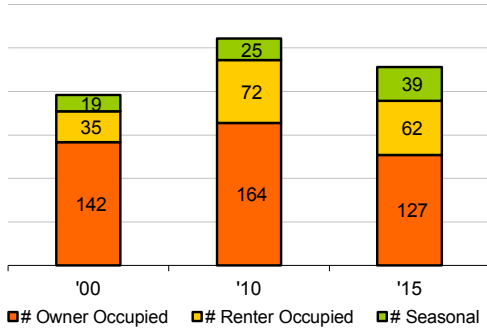
*Not Adjusted for Inflation

Total Employed: 191 7% 5-Yr % change

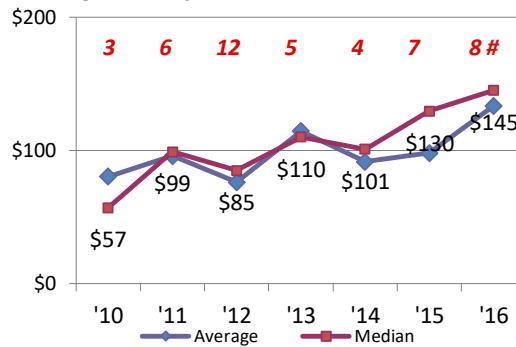
BC Unemployment Rate: 3.2%

CITY HOUSING STOCK

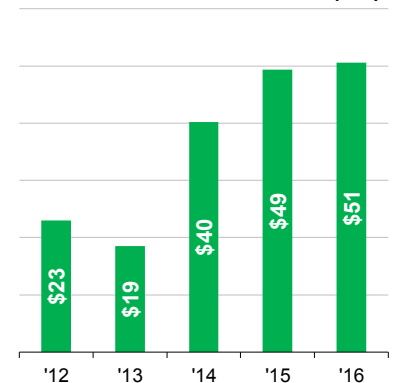
Housing Stock Utilization(# units)



Single Family/Condo Sales (\$000 & #)



Total Assessed Tax Value (\$m)

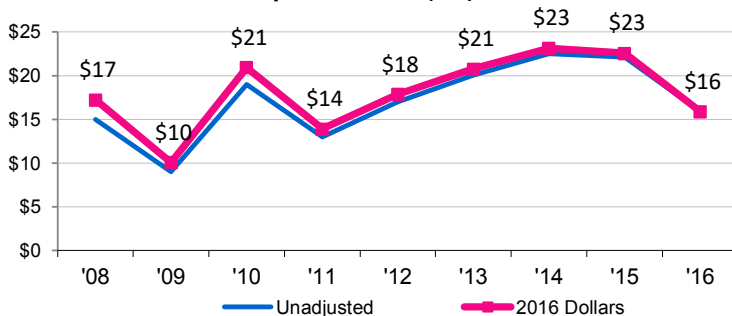


Total Housing Units (2015): 228
Avg Household Size ('15): 2.80

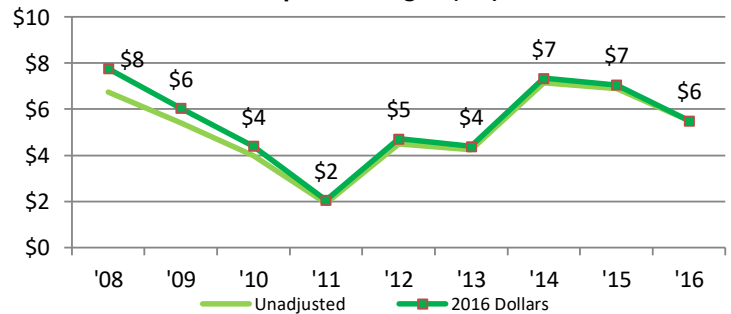
3-BR Rental/mo: na
1-Yr % change: na

CITY BUSINESS ACTIVITY

Reported Sales (\$m)

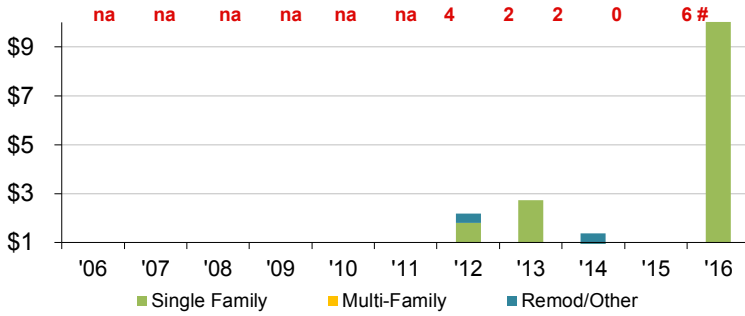


Reported Wages (\$m)

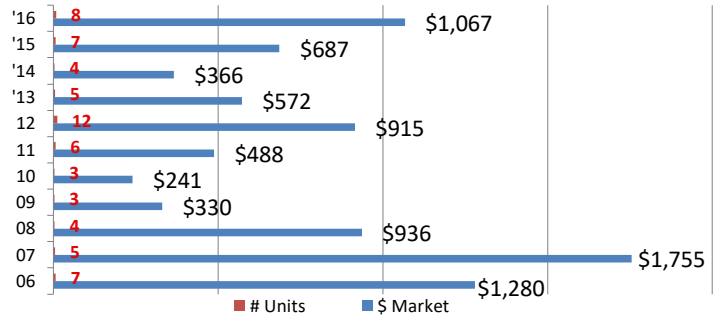


CITY RESIDENTIAL ACTIVITY

Residential Building Permits (\$000 & #)

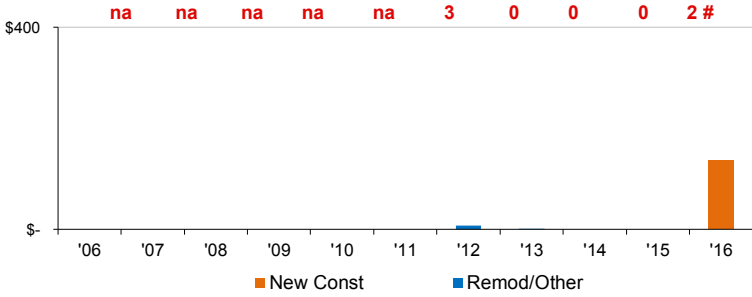


Residential Sales Transactions (\$000 & #)

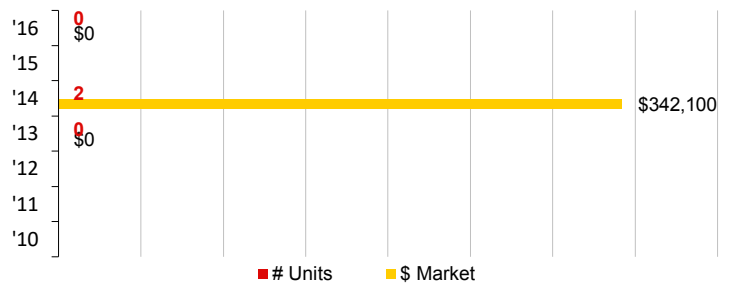


CITY COMMERCIAL ACTIVITY

Commercial Building Permits (\$000 & #)

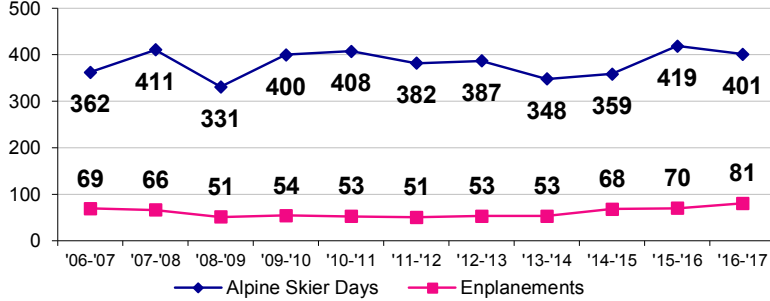


Commercial Sales Transactions (\$000 & #)



CITY TOURISM MEASURES

Skier & Airport Visits (000)

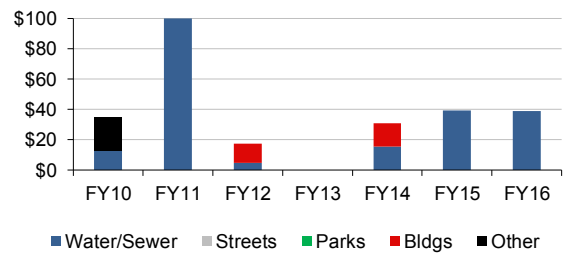


CITY GOVERNMENT ACTIVITY

CITY OF CAREY:

	FY 2016	FY 2015	% Change
Revenue Expenditures (\$m)	0.35	\$ 0.23	51%
Capital Expenditures (\$m)	0.039	\$ 0.03	27%
Employees (# FTE)	9.2	9.2	0%
Property Tax Rate (\$/mil)			

City Capital Spend (\$000)



OTHER STATISTICS

RELATIVE COMPARISONS:

	Blaine	Idaho	U.S.
Unemployment Rate (%)	3.2%	3.8%	4.9%
School Spending (\$000/pupil)	\$ 16	\$ 7	\$ 11
Graduation Rates (%)	89%	79%	83%
Bachelors Degree or Higher (%)	43%	26%	30%
Population Density (per mile ²)	8	20	86
Travel time to work (minutes)	17	20	25
Home Electrical Rates (\$/kWh)	\$ 0.06	\$ 0.07	\$ 0.12
Serious Crime ('16; per 100k)	2.4%	5.0%	na
Per Capita Income ('15; \$000)	\$ 87.5	\$ 38.4	\$ 48.1

OTHER CAREY DATA:

	2016	2015	2014
Crime/100k	2.1%	1.7%	n/a
Largest Employers:	1 Blaine Co School District 2 City of Carey 3 Carey Rural Fire District		

