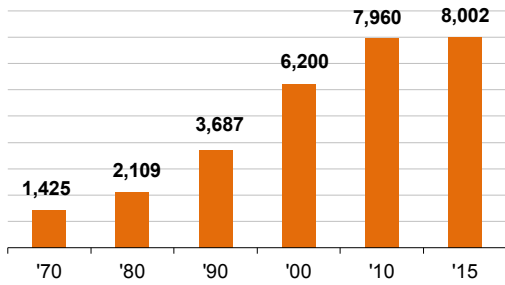


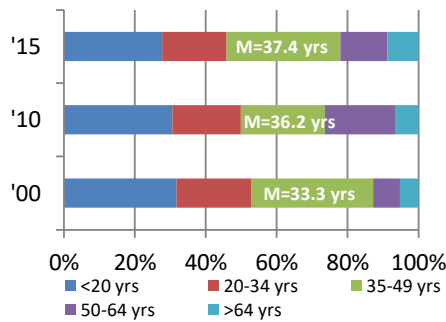


CITY DEMOGRAPHICS

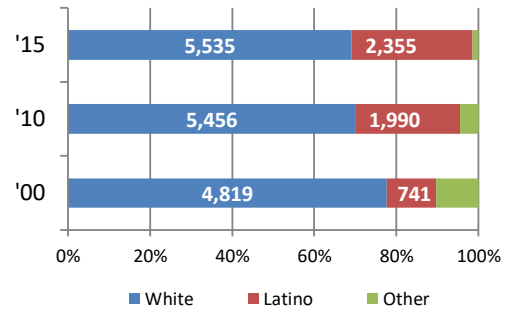
Population



Age

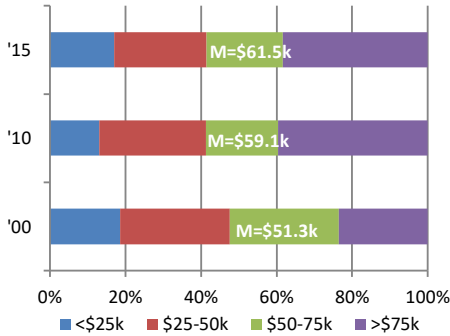


Race/Ethnicity

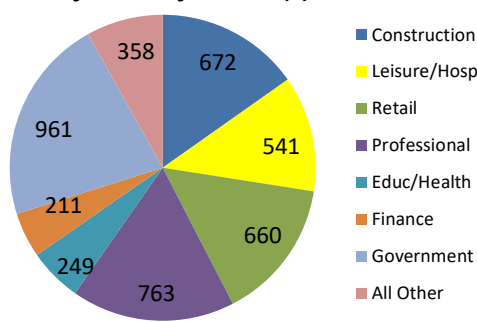


CITY EMPLOYMENT & INCOME

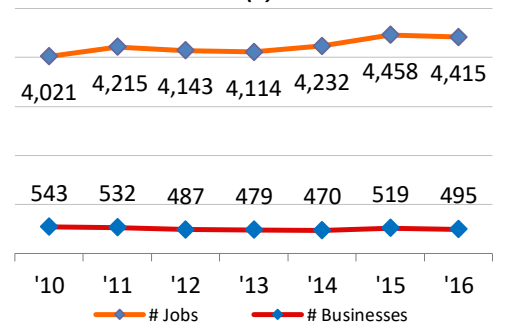
Household Income Distribution*



Jobs by Industry Sector (#)



Jobs & Businesses (#)

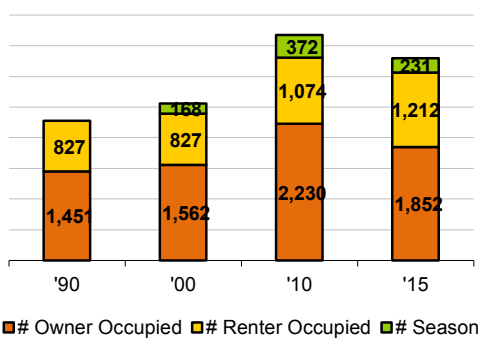


*Not adjusted for inflation

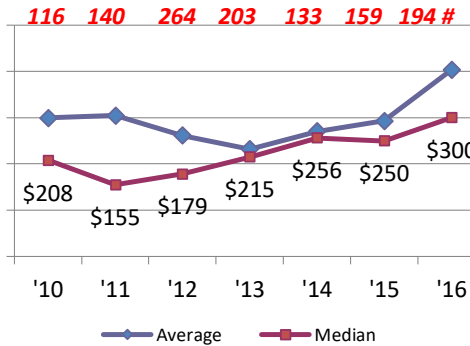
Total Employed: 4,415 6.6% 5-Yr % change BC Unemployment Rate: 3.2%

CITY HOUSING STOCK

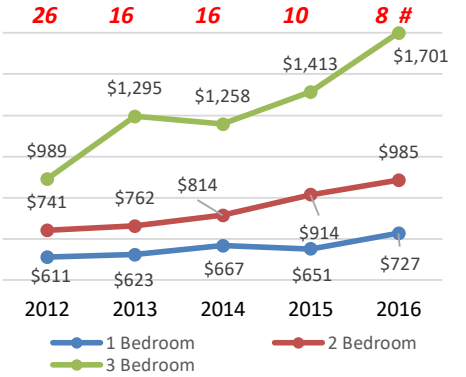
Housing Stock Utilization(# units)



Single Family/Condo Sales (\$000 & #)



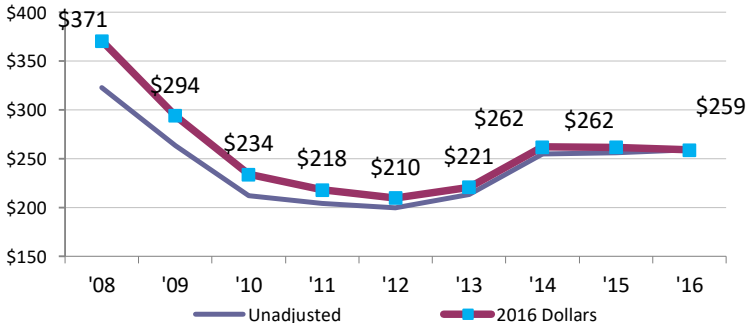
Rental Housing Availability (Ave \$/month & Ave Ads/month)



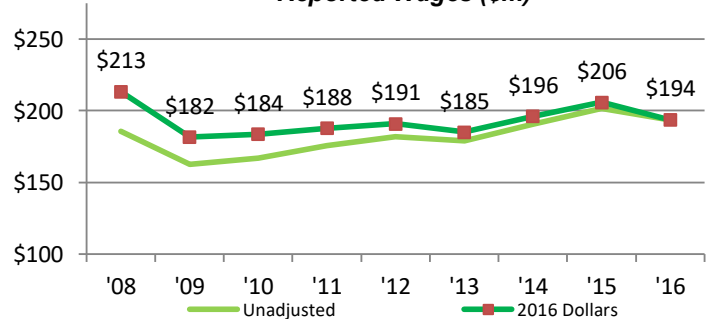
Total Housing Units ('15): 3,295 Average Household Size ('15): 2.61

CITY BUSINESS ACTIVITY

Reported Sales (\$m)

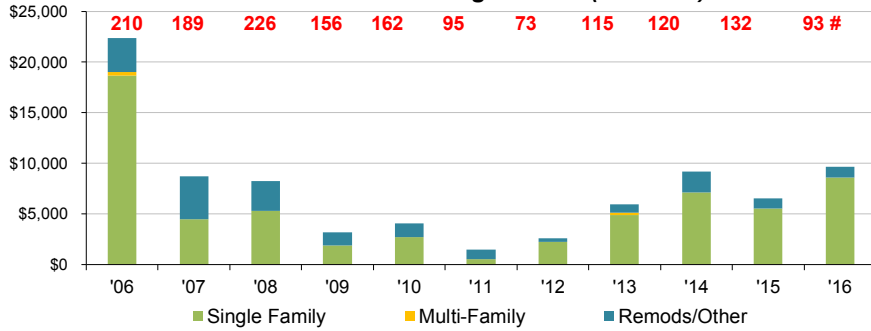


Reported Wages (\$m)

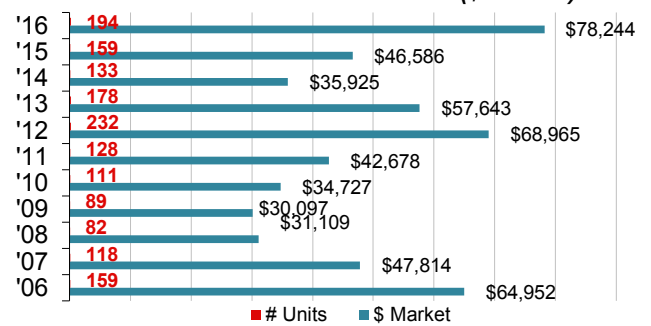


CITY RESIDENTIAL ACTIVITY

Residential Building Permits (\$000 & #)

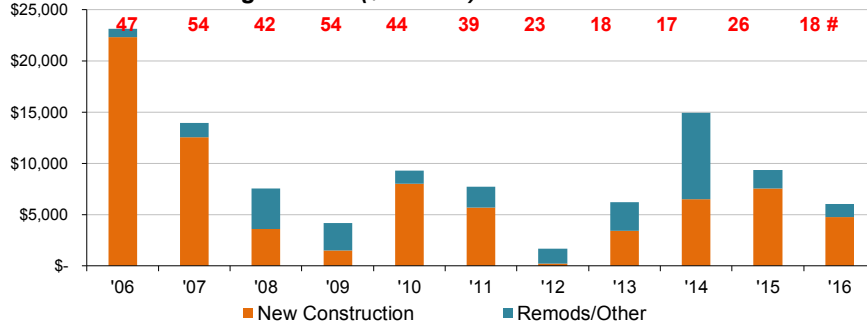


Residential Sales Transactions (\$000 & #)

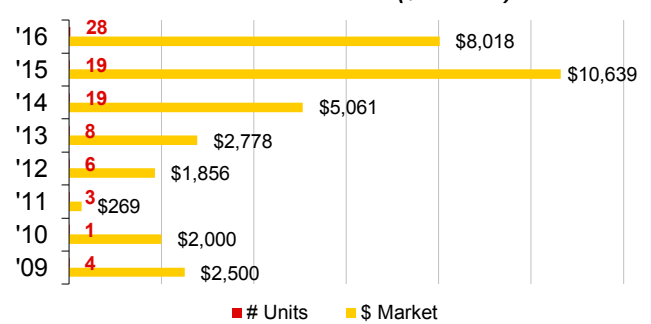


CITY COMMERCIAL ACTIVITY

Commercial Building Permits (\$000 & #)

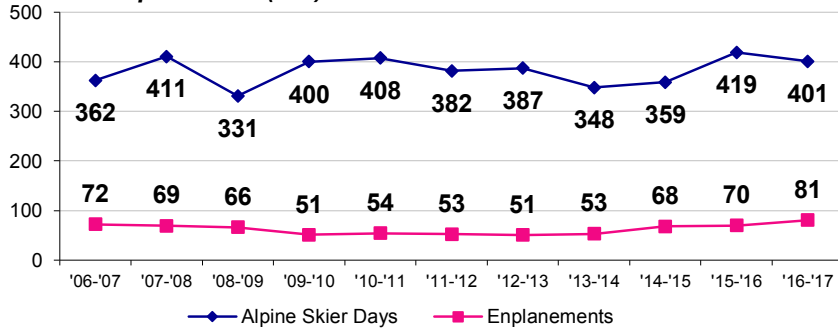


Commercial Sales Transactions (\$000 & #)

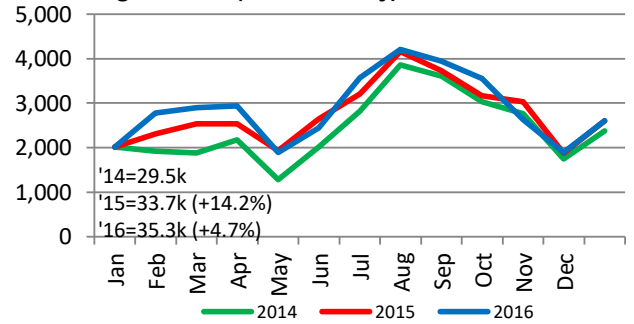


CITY TOURISM MEASURES

Skier & Airport Visits (000)



Room Nights Sold (South Valley)

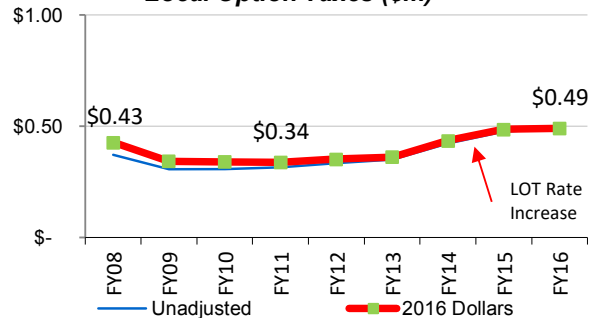


CITY GOVERNMENT ACTIVITY

CITY OF HAILEY

	FY 2016	FY 2015	% Change
Revenue Expenditures (\$m)	\$ 7.59	\$ 6.79	12%
Capital Expenditures (\$m)	1.468	0.48	47%
Employees (# FTE)	60.4	59.1	2%
Property Taxes (\$ per mil)	9318	10,089	-8%
Total Assessed Value (\$m)	\$ 1,057	\$ 1,000	6%

Local Option Taxes (\$m)



OTHER STATISTICS

RELATIVE COMPARISONS:

	Blaine	Idaho	U.S.
Unemployment Rate (%)	3.2%	3.8%	4.9%
School Spending (\$000/pupil)	\$ 16.2	\$ 6.6	\$ 11.1
Graduation Rates (%)	89%	79%	83%
Bachelors Degree or Higher (%)	43%	26%	30%
Population Density (per mile ²)	8	20	86
Travel time to work (minutes)	17	20	25
Home Electrical Rates (\$/kWh)	\$ 0.06	\$ 0.07	\$ 0.12
Serious Crime ('16; per 100k)	2.4%	5.0%	na
Per Capita Income ('15; \$000)	\$ 87.5	\$ 38.4	\$ 48.1

OTHER HAILEY DATA:

	2016	2015	2014
Crime (/100k)	2.3%	2.3%	2.7%
Officers/100k	1.6		
Top 5 Employers:			
	1 Blaine County Schools		
	2 Power Engineers		
	3 Blaine Co. Government		
	4 Albertson's		
	5 Atkinson's Market		

