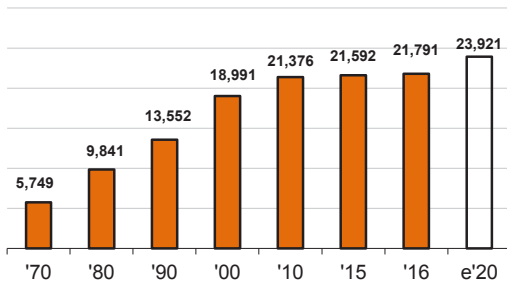
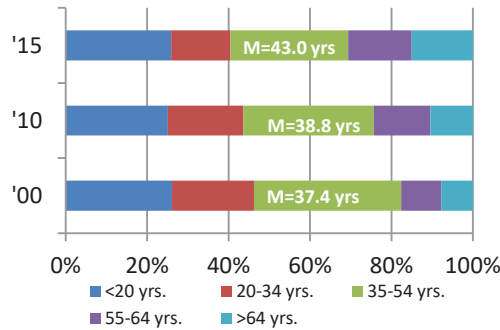


COUNTY DEMOGRAPHICS

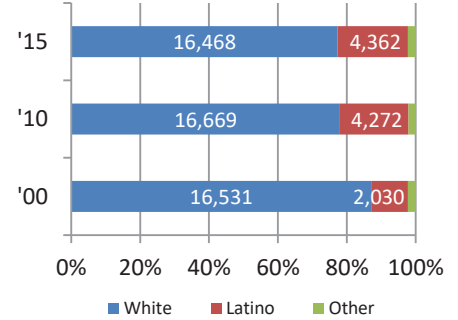
Population



Age

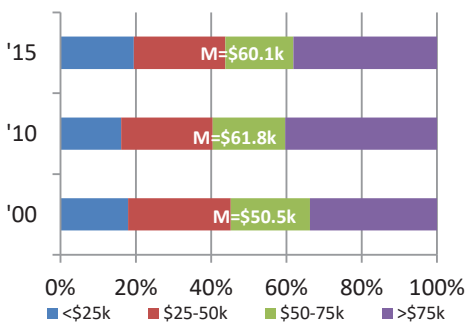


Race/Ethnicity

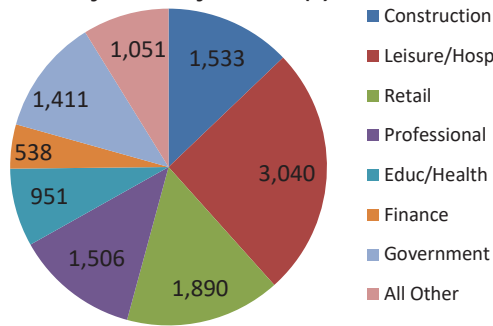


COUNTY EMPLOYMENT & INCOME

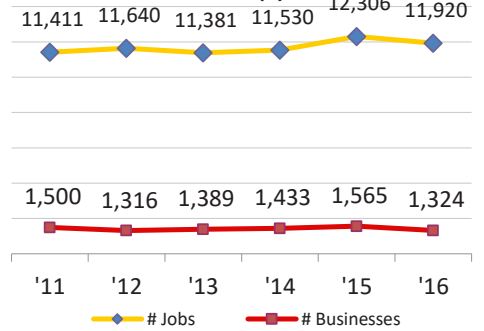
Household Income Distribution*



Jobs by Industry Sector (#)



Jobs & Businesses (#)

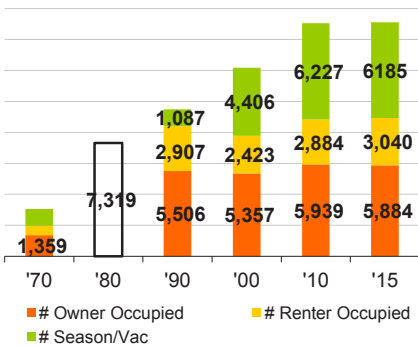


*Not adjusted for inflation

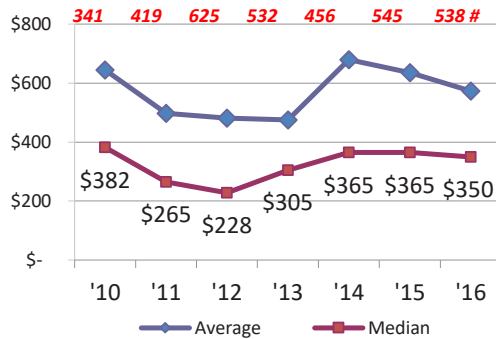
Total Employed: 11,920 2.4% 5-Yr % change BC Unemployment Rate: 3.2%

COUNTY HOUSING STOCK

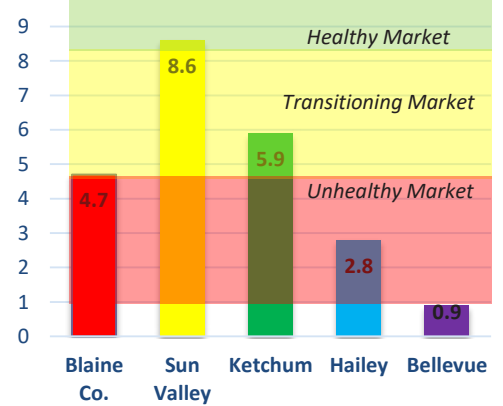
Housing Stock Utilization(# units)



Single Family/Condo Sales (\$000 & #)



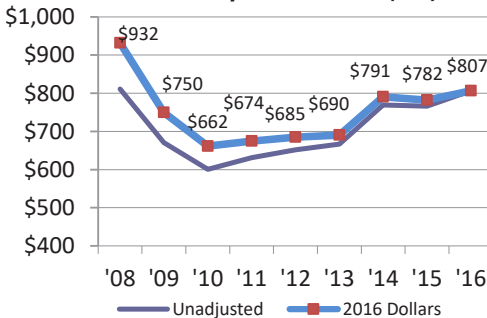
Months of Supply - Dec 2016



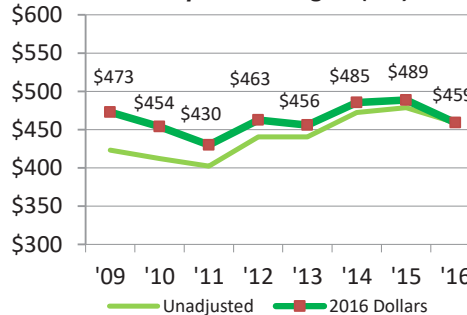
Total Housing Units ('15): 15,109 3-BR Rental/Mo: \$ 2,019
 Avg. Household Size ('14): 2.35 1-Yr % change 27%

COUNTY BUSINESS ACTIVITY

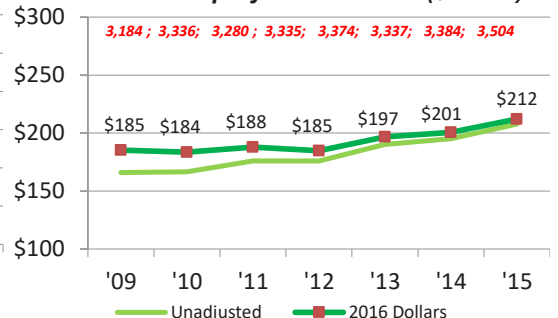
All Reported Sales (\$m)



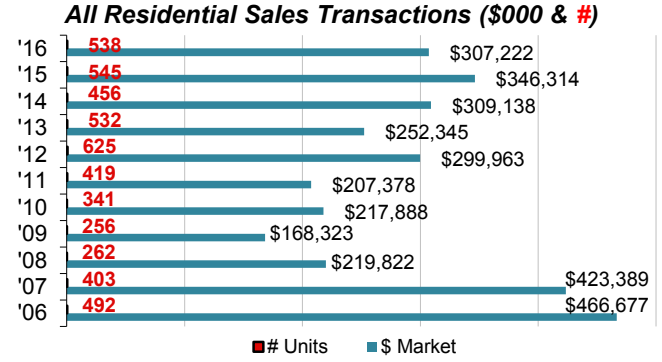
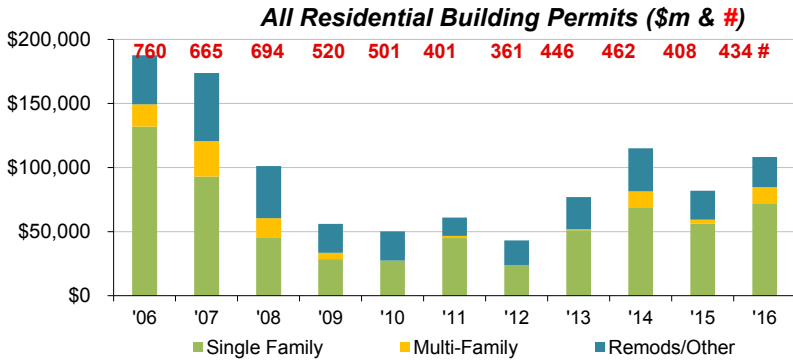
All Reported Wages (\$m)



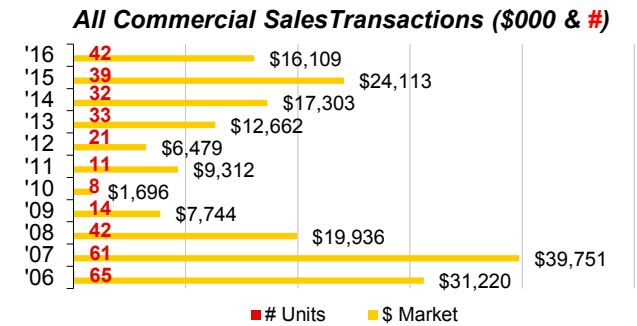
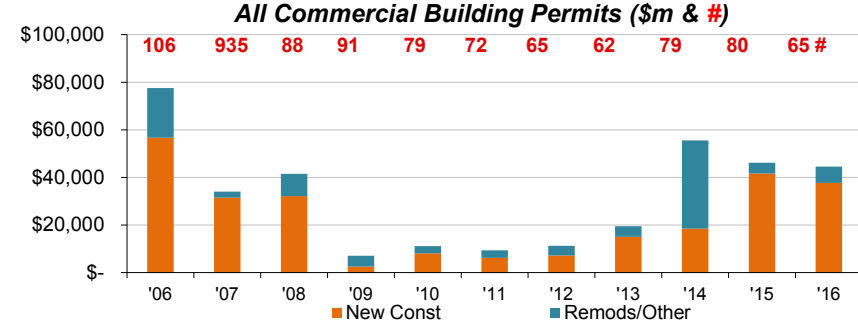
Self Employment Income (\$m & #)



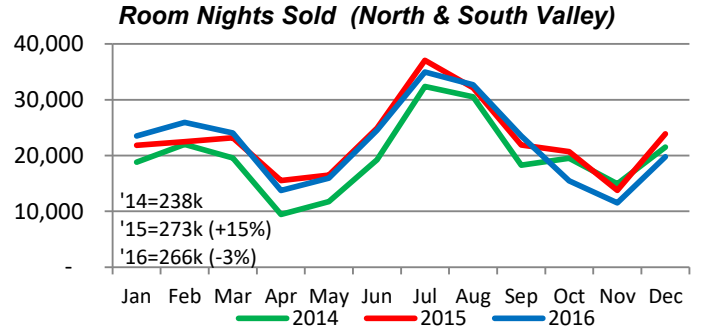
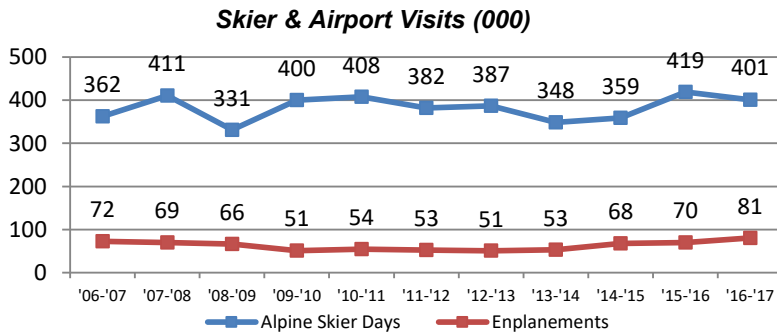
COUNTY RESIDENTIAL ACTIVITY



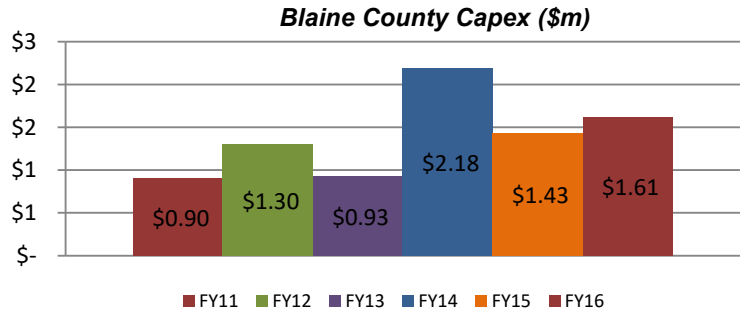
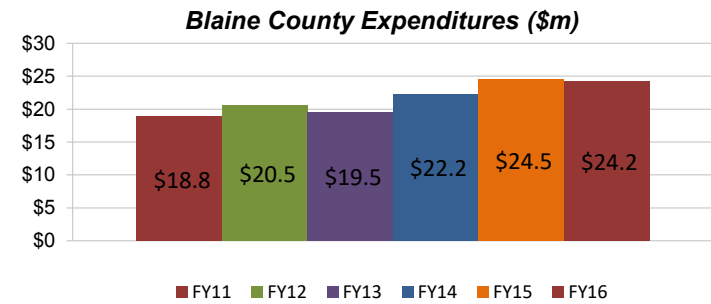
COUNTY COMMERCIAL ACTIVITY



TOURISM & RECREATION



GOVERNMENT EXPENDITURES



OTHER STATISTICS

RELATIVE COMPARISONS:	Blaine	Idaho	U.S.	OTHER COUNTY DATA:	2016	2015	2014
Unemployment Rate (%)	3.2%	3.8%	4.9%	Unemployment	3.2%	3.5%	4.5%
School Spending (\$000/pupil)	\$ 16.2	\$ 6.6	11.1	Crime/100k	2.1%	2.3%	2.4%
Graduation Rate (%)	89%	79%	83%	County Employees:	165	169	169
Bachelors Degree or Higher (%)	43%	26%	30%	Large Employers:	1 Sun Valley Co. 2 Blaine County School District 3 St. Lukes Wood River 4 Atkinsons 5 Power Engineers		
Population Density (per mile ²)	8	20	86				
Travel time to work (minutes)	17	20	25				
Home Electrical Rates (\$/kWh)	\$ 0.06	\$ 0.07	0.12				
Serious Crime ('16; per 100k)	2.4%	5.0%	na				
Per Capita Income ('15; \$000)	\$ 87.5	\$ 38.4	48.1				

