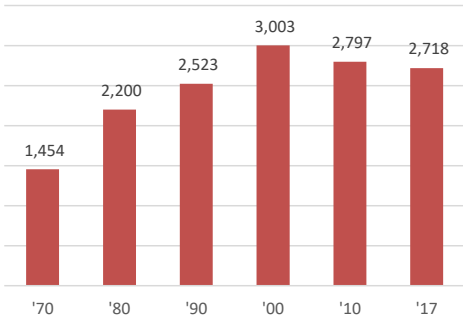


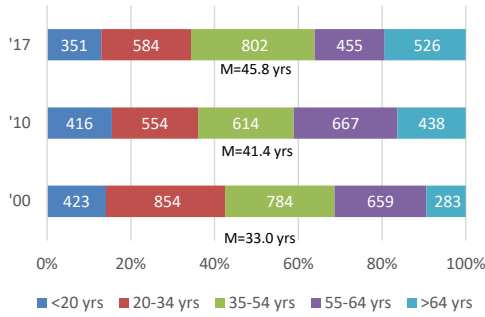


**CITY DEMOGRAPHICS**

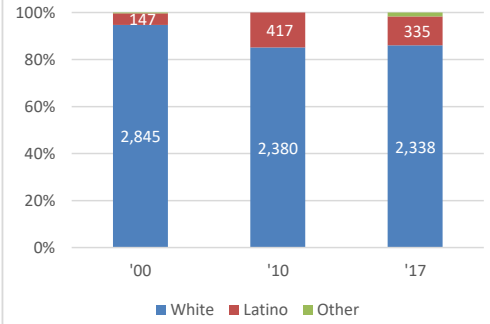
**POPULATION**



**AGE**

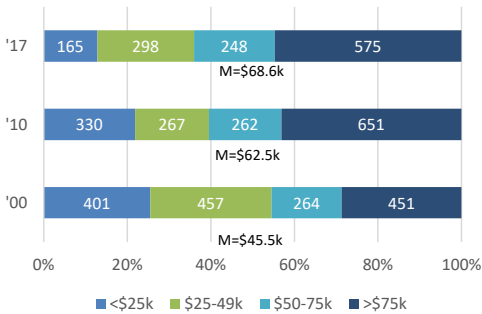


**RACE/ETHNICITY**

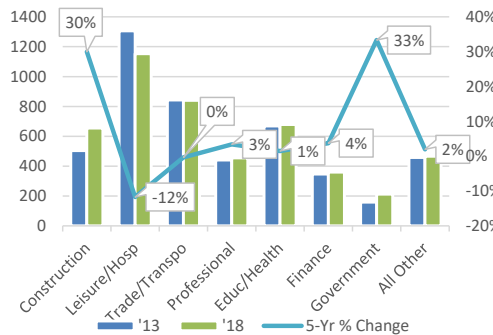


**CITY EMPLOYMENT & INCOME**

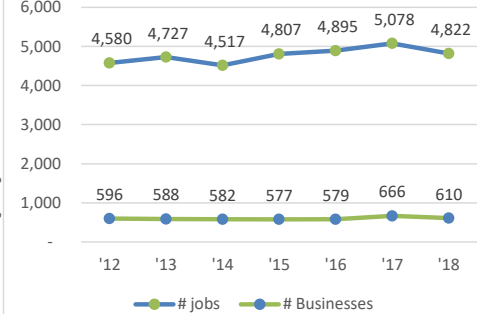
**HOUSEHOLD INCOME DISTRIBUTION**



**JOBS BY INDUSTRY SECTOR**

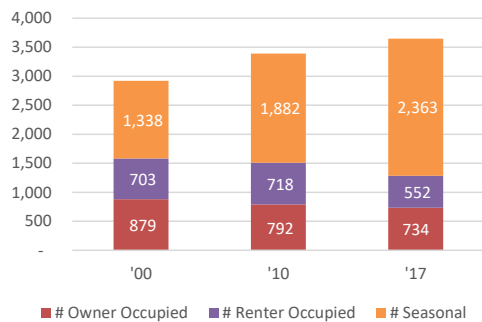


**NUMBER JOBS AND BUSINESSES**

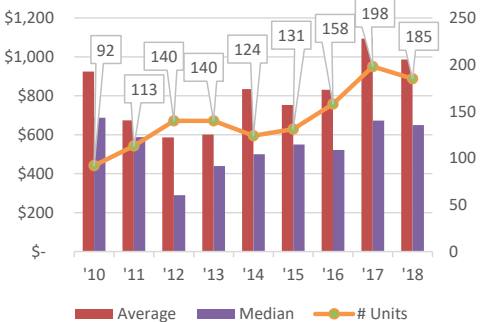


**CITY HOUSING STOCK**

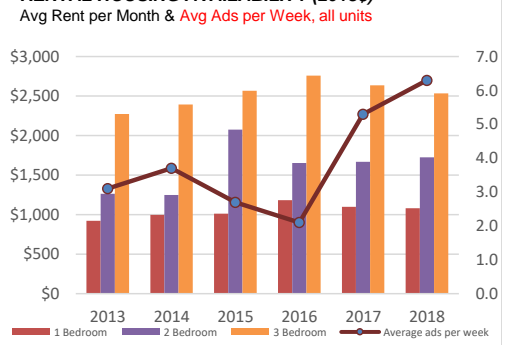
**HOUSING STOCK UTILIZATION (# units)**



**RESIDENTIAL UNIT PRICE (\$000)**

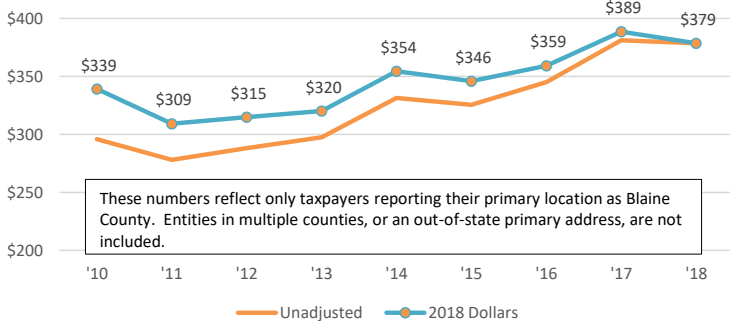


**RENTAL HOUSING AVAILABILITY (2018\$)**

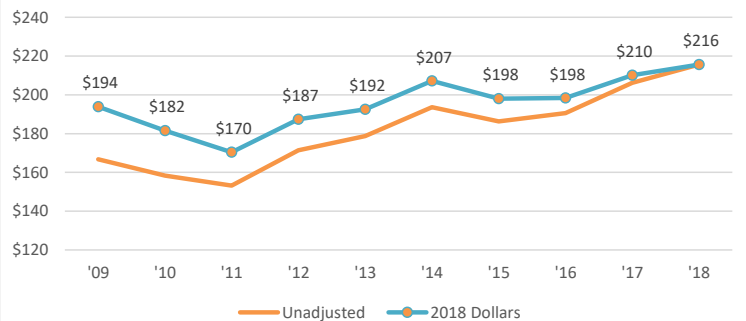


**CITY BUSINESS ACTIVITY**

**REPORTED SALES (\$M)**

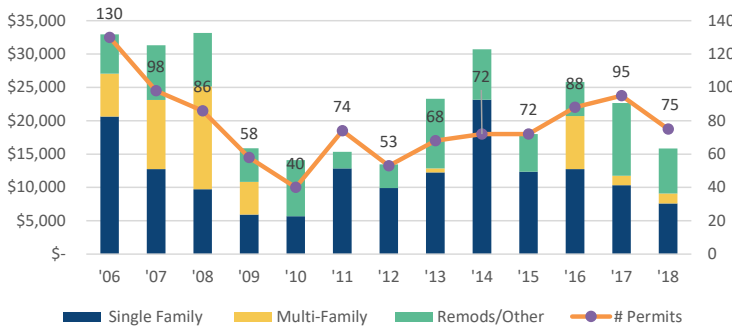


**REPORTED WAGES (\$M)**

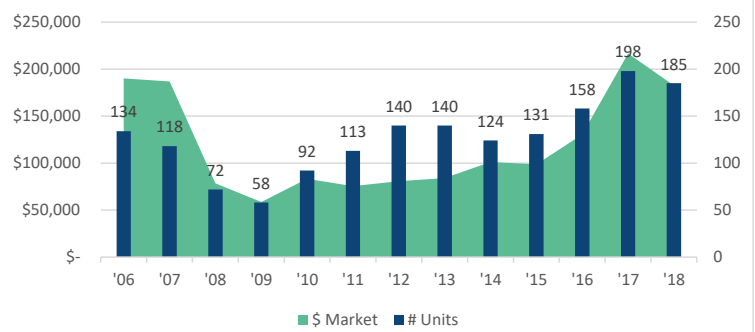


## CITY RESIDENTIAL ACTIVITY

### RESIDENTIAL BUILDING PERMITS (\$000)

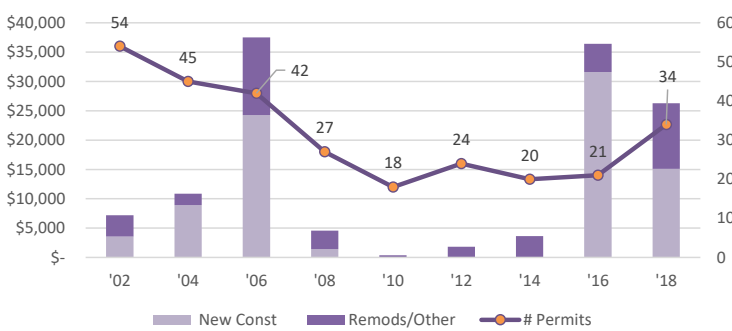


### RESIDENTIAL SALES TRANSACTIONS (\$000)

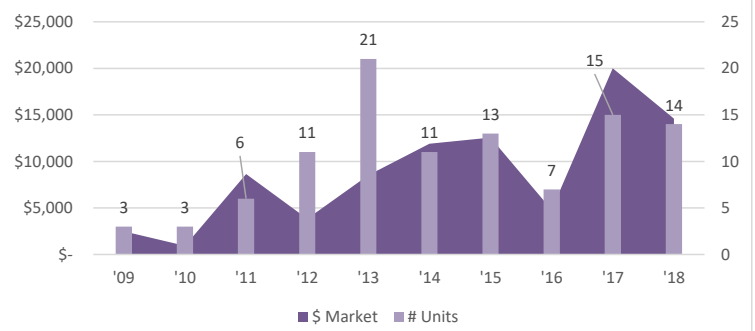


## CITY COMMERCIAL ACTIVITY

### COMMERCIAL BUILDING PERMITS (\$000)

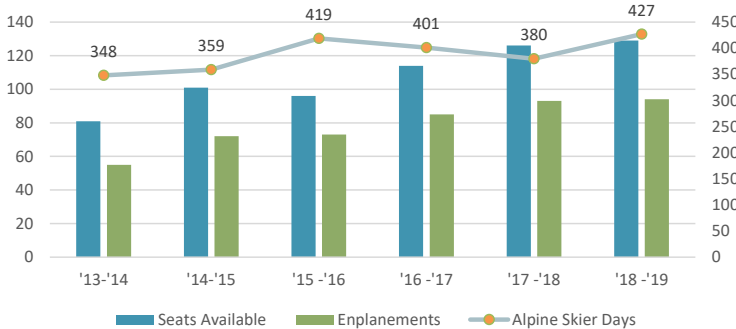


### COMMERCIAL SALES TRANSACTIONS (\$000)

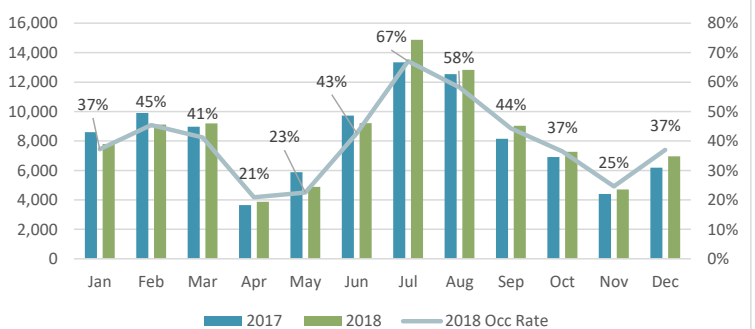


## TOURISM MEASURES

### SEATS, ENPLANEMENTS, & SKIER DAYS (in 000's)



### ROOM NIGHTS SOLD AND OCCUPANCY RATE

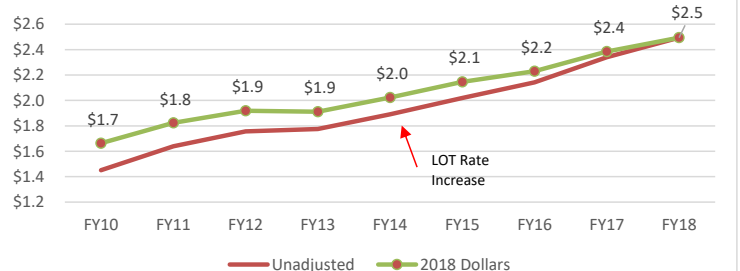


## CITY GOVERNMENT ACTIVITY

### CITY OF KETCHUM

	FY 2018	FY 2017	% Change
Revenue Expenditures (\$m)	\$ 17.28	\$ 16.83	3%
Capital Expenditures (\$m)	\$ 11.33	\$ 9.44	20%
Employees (# FTE)	not reported	79.0	#VALUE!
Property Tax Rate (\$ per mil)	\$ 0	\$ 6.962	-100%
Total Assessed Tax Value (\$n)	\$ 3,342	\$ 3,186	4.9%

### LOCAL OPTION TAXES (\$m)



## OTHER STATISTICS

### RELATIVE COMPARISONS:

	Blaine	Idaho	U.S.
Unemployment Rate (%)	2.3%	2.8%	3.9%
School Spending (\$000/pupil)	\$16.30	\$7.40	\$12.20
Graduation Rates (%)	86%	81%	85%
Bachelors Degree or Higher (%)	40%	27%	31%
Population Density (per mile <sup>2</sup> )	8	22	93
Travel time to work (minutes)	19	21	26
Home Electrical Rates (\$/kWh)	\$0.09	\$0.09	\$0.12
Serious Crime ('18; per 100k)	2.0%	5.0%	N/A
Per Capita Income ('18; \$000)	\$102.55	\$41.83	\$51.64

### OTHER KETCHUM DATA:

	2018	2017	2016	2015	2014
Crime/100k	3.1%	2.9%	3.7%	4.0%	4.0%
Officers/1k		4.7	4.0		
Top 5 Employers:	1 YMCA 2 Atkinson's Markets 3 City of Ketchum 4 Zenergy 5 Mountain Rides				